



Quality
made in
Europe

Plasma cutting equipment

PRO-CUT plasma cutting devices – compact, economically efficient and powerful through thick and thin

Excellent economic efficiency and first-class cutting quality are the special characteristics of the portable Schweißkraft Plasma cutting systems. Guaranteed reliability in tough deployment in industry and crafts.

Universally deployable

- ▶ Stainless steel, aluminium, steel, non-ferrous metals, and other electrically conductive metals, even with a coated surface, are cut without any problems
- ▶ From thin sheet to thick sheet
- ▶ Separating and quality cutting

Optimum cut quality with a steep cutting edge in manual and contour Cutting

- ▶ through precisely controlled cutting current continuously variable
- ▶ High power reserves guarantee best-in-class material penetration, even at the end of the cut, which is otherwise critical

Reliable ignition

- ▶ HF pilot arc ignition (PRO-CUT 35 S/70/90/120)
- ▶ Possible in both contact and non-contact mode

Operator and machine safety

- ▶ IP degree of protection IP 21, suitable for use at workplaces with an increased risk of electrical hazard (PRO-CUT 35 S/70/90)
- ▶ IP degree of protection IP 23 for PRO-CUT Tornado and PRO-CUT 120

Maximum economic efficiency

- ▶ thanks to fast cutting speed
- ▶ thanks to long service life
- ▶ because less rework is required thanks to excellent cut quality, even at the end of the cut
- ▶ due to requirements-driven gas post-flow time
- ▶ thanks to quick-start function for immediately ignition, even in the gas post-flow time
- ▶ due to a lower power rating, high efficiency and power factor

Easiest handling

- ▶ thanks to compact and mobile design
- ▶ portable and thus suitable for almost any field of application
- ▶ PRO-CUT 35 S globally deployable thanks to sinusoidal inverter technology
- ▶ easy handling during transport due to low weight
- ▶ with carrying handle

Inexpensive operating costs

- ▶ No costs for carrier gases, unlike oxyacetylene cutting
- ▶ Compressed air for plasma gas is inexpensive

Process

- ▶ Plasma cutting

Cutting performance

- ▶ up to max. 40 mm separating cut

Base materials

- ▶ all electrically conductive metals, even if coated
- ▶ stainless steel
- ▶ Aluminium
- ▶ Steel
- ▶ Non-ferrous metals

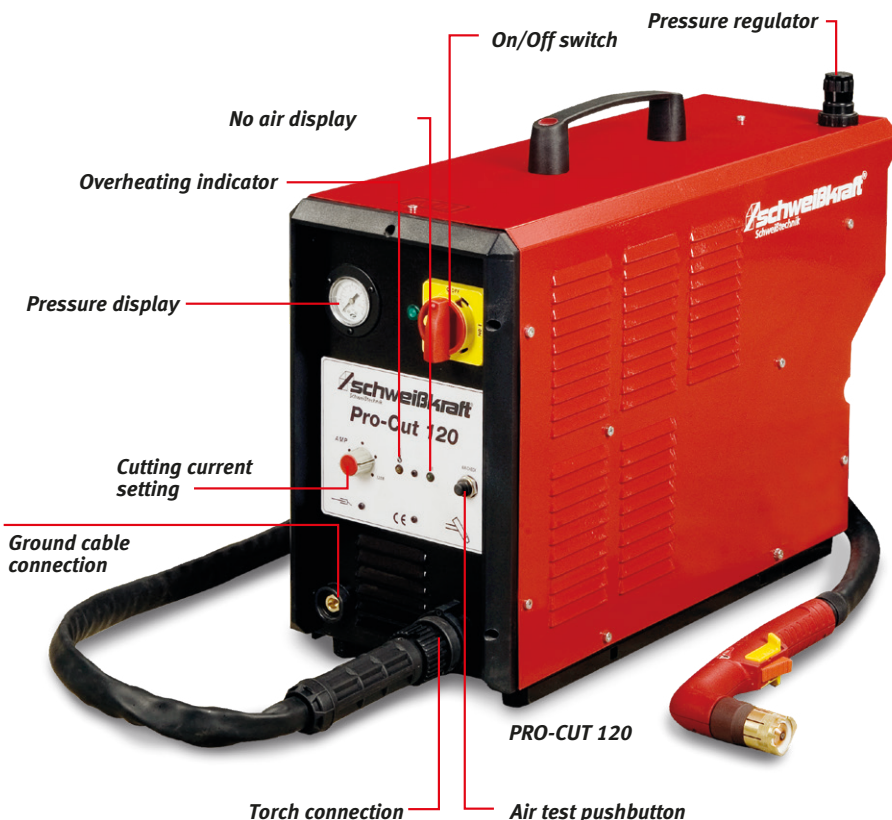
Applications

- ▶ Plant, container, machine, steel construction
- ▶ Chemical plant construction
- ▶ Maintenance/repairs
- ▶ Plant and pipeline construction
- ▶ Construction site and mobile use

State-of-the-art inverter technology! Extremely light!



PRO-CUT Tornado
Plasma cutting system with
integrated compressor
(no external compressed air source needed)



Cutting performance

PRO-CUT Tornado

Quality cutting approx. 4 mm*

4 mm

PRO-CUT 35 S

Quality cutting approx. 10 mm*

10 mm

PRO-CUT 70

Quality cutting approx. 20 mm*

20 mm

PRO-CUT 90

Quality cutting approx. 25 mm*

25 mm

PRO-CUT 120

Quality cutting approx. 35 mm*

35 mm

*in steel



Model	PRO-CUT Tornado	PRO-CUT 35 S	PRO-CUT 70	PRO-CUT 90	PRO-CUT 120
Art. no.	1087059	1087065	1087061	1087062	1087120
Technical specifications					
Torch type (connection)	fixed installation	fixed installation	Euros	Euros	Euros
Adjusting range	12 - 25 A	5 - 35 A	25 - 70 A	25 - 90 A	25 - 120 A
Quality cutting steel (ST37) approx.	4 mm	10 mm	20 mm	25 mm	35 mm
Separating cut steel (ST37) approx.	5 mm	12 mm	25 mm	30 mm	40 mm
Quality cutting stainless steel approx.	3 mm	10 mm	20 mm	25 mm	28 mm
Separating cut stainless steel approx.	4 mm	12 mm	23 mm	27 mm	32 mm
Quality cutting ALUMINUM approx.	4 mm	7 mm	18 mm	23 mm	28 mm
Separating cut ALUMINUM approx.	6 mm	10 mm	21 mm	25 mm	32 mm
Air consumption	-	100 l/min	200 l/min	200 l/min	230 l/min
Pressure	-	3.5-4.0 bar.	5 bar	5 bar	6 bar
Mains voltage*	230 V ±10%	230 V ±10%	3 x 400 ±10%	3 x 400 ±10%	3 x 400 ±10%
Frequency	50/60 Hz	50/60 Hz	50/60 Hz	50/60 Hz	50/60 Hz
Open circuit voltage	270 V	270 V	250 V	250 V	450 V
Power consumption Plasma at 100%	2.4 kVA	2.3 kVA	9.9 kVA	9.9 kVA	15.5 kVA
Maximum current consumption	18 A	18 A	19 A	26 A	38 A
Fuse	16 A	16 A	16 A	25 A	25 A
Duty cycle plasma	25 A - 50 %	35 A - 40 %	70 A - 60 %	90 A - 40 %	120 A - 40 %
Current at 100% duty cycle 40 °C Plasma	20 A	22 A	70 A	90 A	120 A
Cos phi power factor	0.85	0.99	0.85	0.85	0.85
Degree of protection	IP 23	IP 21	IP 21	IP 21	IP 23
Insulation class	F	F	F	F	F
Operating temperature	-10 +40 °C	-10 +40 °C	-10 +40 °C	-10 +40 °C	-10 +40 °C
Weight	10 kg	8 kg	16 kg	17 kg	32 kg
Dimensions (L x W x H), mm	470 x 150 x 245	475 x 150 x 220	470 x 180 x 225	420 x 180 x 270	610 x 230 x 460

Schweißkraft equipment has the **S mark** and complies with standard EN 60 974-1; -10/EMC class A

***Does not support generator operation!**



MIG/MAG

Multifunctional inverter

TIG inverters

Electrode inverters

Plasma cutting equipment

Electrochemical processing

Welding accessories

Scope of supply
PRO-CUT TORNADO

- Plasma device
- Torch 4 m
- Ground cable

Scope of supply
PRO-CUT 35 S

- Plasma device
- Torch 5 m
- Ground cable

Scope of supply
PRO-CUT 70/90/120:

- Plasma device
- Torch 6 m
- Ground cable

TIG torches

Designation	Art. no.
Plasma torch S25K, 4 m	1339606
Plasma torch S45, 5 m	1333100
Plasma torch A81, 6 m	1339201
Plasma torch A151, 6 m	1339600



S25K, 4 m



S45, 5 m



A81, 6 m



A151, 6 m

Wear part set

Designation	Art. no.
Wear part set S 25K <i>consisting of:</i> 5 x each electrode short S30/S45, 2 x diffusor S45, 3 x cutting tip 0.6 S 20/30 45, 3 x cutting tip 0.8 S 30/S 45, 2 x tip retaining cap S 25K, 3 x spacer spring S 45	1333104
Wear part set S 45 <i>Consisting of:</i> 5 x each electrode short S30/S45, 2 x diffusor S45, 3 x cutting tip 0.6 S 20/30 45, 3 x cutting tip 0.8 S 30/S 45, 1 x sorting box, 2 x tip retaining cap S 45, 3 x spacer spring S 45	1333101
Wear part set A81 <i>consisting of:</i> 3 x electrode short A81, 3 x plasma tip 1.0 mm A60/A80, 1 x diffusor A60/A80, 1 x tip retaining cap A80, 1 x sorting box, 1 x spacer 4 tips A60, 1 x diffusor tube, short A81	1339230
Wear part set A151 <i>consisting of:</i> 3 x electrode R 145, 1 x plasma tip 1.4 mm R 145, 1 x tip retaining cap cylindrical 1x plasma tip 1.6 mm R 145, 1 x plasma tip 1.8 mm R 145, 1 x sorting box, 1 x insulator (vortex ring) R 145, 1 x diffusor tube A 151, 1 x spacer 4 tips R 145	1339640



Wear part set
Plasma



Wear part set
A151

Nanofilter 0.01 micron



Condensate drain AOK 16 B

Nanofilters

For separating solid impurities up to **0.01 µm**. Residual oil aerosol content of up to **0.01 mg/m³** at 20 °C and 1 bar, operating temperature 1.5 to 65 °C, absolute compressed air quality as per ISO 8573-1.

Designation	Art. no.
Nanofilter ANF 0060 complete	2053430
Spare filter element	2053431

Circular cutting device

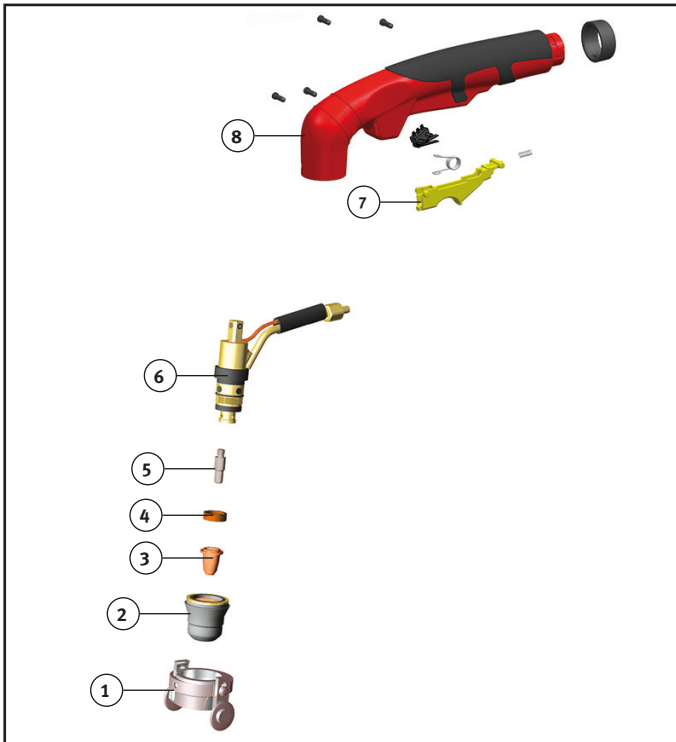
Designation	Art. no.
Circular cutting device for plasma cutters S25K and S45	1333121
Circular cutting device for plasma cutter A81	1330115
Circular cutting device for plasma cutter A151	1339560



Circular cutting device for
plasma cutters S25K and S45

Plasma cutting equipment

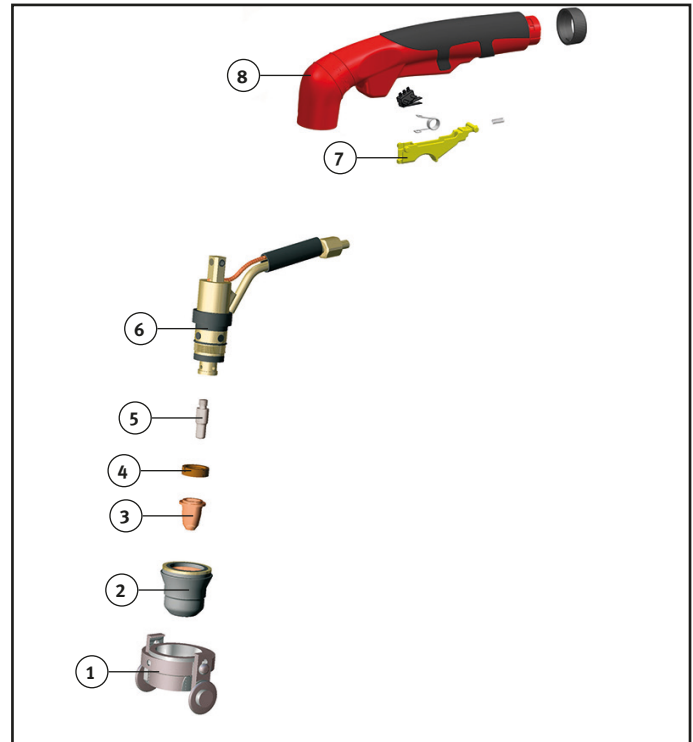
Plasma torch S25K, air-cooled for PRO-CUT Tornado



Designation		Art. no.	
Plasma torch S25K, 4 m		1339606	
No.	Designation	Art. no.	PQ
6	Torch body	1333125	1
5	Plasma electrode short	1333109	10
	Plasma electrode medium	1333110	10
	Plasma electrode long	1333111	10
4	Diffuser	1333112	2
3	Cutting tip 0.6 mm, 20 A	1333113	10
3	Cutting tip 0.8 mm, 30 A	1333118	10
3	Cutting tip 0.9 mm, 40 A	1333117	10
	Cutting tip 1.0 mm	1333123	10
	Cutting tip long 0.65 mm	1333142	10
	Cutting tip long 0.90 mm	1333143	10
2	tip retaining cap	1333127	4
	Spacer spring*	1333120	10
1	Guide carriage	1333141	1
8	Handle shell complete	1333124	1
7	Switch short, 2-pin	1333126	1
11	Circular cutting device	1333121	1
12	Wear part set S25K	1333104	1

*A short electrode (1333109) and a cutting tip (1333123) are required for use

Plasma torch S45, air-cooled for PRO-CUT 35 S



Designation		Art. no.	
Plasma torch S45, 5 m		1333100	
No.	Designation	Art. no.	PQ
6	Torch body	1333125	1
5	Electrode short	1333109	10
	Electrode medium	1333110	10
	Electrode long	1333111	10
4	Diffuser	1333112	2
3	Cutting tip 0.6 mm	1333113	10
3	Cutting tip 0.8 mm	1333118	10
3	Cutting tip 0.9 mm	1333117	10
	Cutting tip 1.0 mm	1333123	10
	Cutting tip long 0.65 mm	1333142	10
	Cutting tip long 0.90 mm	1333143	10
2	tip retaining cap	1333119	4
	Spacer spring *	1333120	10
1	Guide carriage	1333141	1
8	Handle shell complete	1333124	1
7	Switch short, 2-pin	1333126	1
13	Circular cutting device	1333121	1
14	Wear part set S45	1333101	1

*A short electrode (1333109) and a cutting tip (1333123) are required for use



Wear part set S25 K



Circular cutting device



Wear part set S25 K

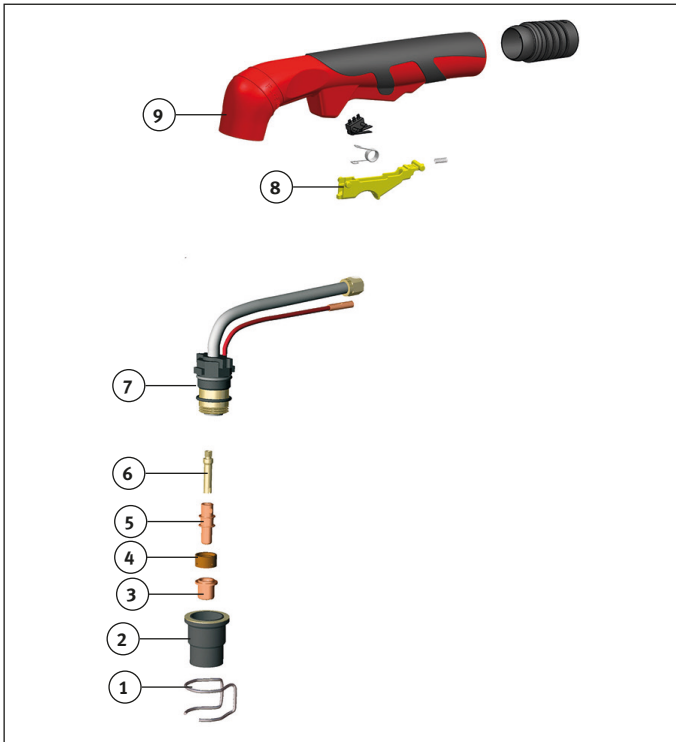


Circular cutting device

Specifications:	
Load:	20 A (DC 35%)
Pressure	2.0 bar
Compressed air consumption:	31 l/min

Specifications:	
Load:	40 A (DC 60%)
Pressure	5.0 bar
Compressed air consumption:	115 l/min

Plasma torch A81, air-cooled for PRO-CUT 70/90



Designation		Art. no.	
Plasma torch A81, 6 m		1339201	
No.	Designation	Art. no.	PQ
7	Torch body	1339221	1
	O-ring (for 1339221)	1339015	10
6	Diffusor tube short	1339222	2
	Diffusor tube long	1339223	2
4	Diffuser	1339016	2
5	Electrode short	1339225	10
	Electrode long	1339226	10
	Cutting tip 50 A 1.0 mm	1339020	10
3	Cutting tip 80 A 1.2 mm	1339022	10
	Cutting tip long 1.2 mm	1339025	10
2	tip retaining cap	1339030	2
1	Spacer spring	1339034	10
	Spacer 2 tips	1339033	2
	Spacer 4 tips	1339036	2
	Guide carriage Ø 24.3 mm	1339040	1
	Contact protection long	1339041	1
9	Handle shell complete	1339518	1
8	Switch short, 2-pin	1339632	1
	Ball joint with clamping ring	1339224	1
	Wear part set A81	1339230	1



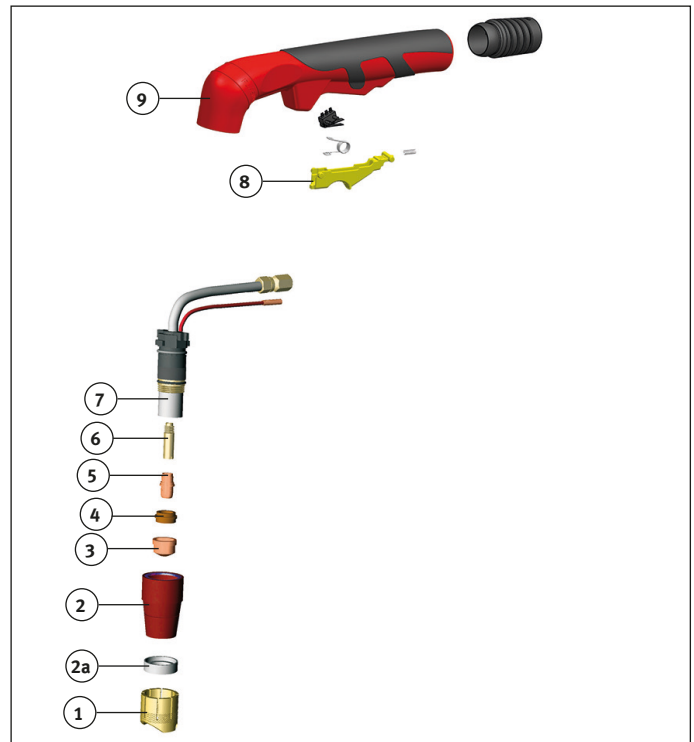
Wear part set A81



Wear part set A151

Specifications:	
Load:	60 A (DC 100%)/80 A (DC 60%)
Pressure	5.0 bar
Compressed air consumption:	155 l/min

Plasma torch A151, air-cooled for PRO-CUT 120



Designation		Art. no.	
Plasma torch A151, 6 m		1339600	
No.	Designation	Art. no.	PQ
7	Torch body	1339621	1
	O-Ring (for 1339621)	1339515	10
6	Diffusor tube	1339622	2
5	Electrode short 20.5 mm	1339520	10
	Electrode long 43.1 mm	1339521	10
4	Diffuser	1339522	2
3	Cutting tip 100 A, 1.4 mm	1339524	10
	Cutting tip 130 A, 1.6 mm	1339526	10
	Cutting tip 140 A, 1.8 mm	1339528	10
	Cutting tip Plasma, 3.0 mm	1339530	10
	Cutting tip long 50 A 1.1 mm	1339523	10
	Cutting tip long 100 A 1.4 mm	1339634	10
	Cutting tip long 130 A 1.7 mm	1339637	10
	Cutting tip long 140 A 1.9 mm	1339639	10
2	Tip retaining cap conical	1339546	2
	Tip retaining cap cylindrical	1339541	2
	Tip retaining cap contact	1339626	2
2a	Spacer	1339544	10
	Spacer 28 mm	1339550	2
1	Spacer 30 mm	1339545	2
	Spacer	1339543	10
	Spring support mount	1339548	10
	Spacer spring	1339549	10
	Spacer 2 tips	1339552	2
	Spacer 4 tips	1339553	2
	Guide carriage	1339559	1
	Tip guard contact	1339627	10
	Tip guard	1339628	10
9	Handle shell complete	1339518	1
8	Switch short, 2-pin	1339632	1
	Ball joint with clamping ring	1339631	1
	Wear part set A151	1339640	1

Specifications:	
Load:	120 A (DC 100%)/150 A (DC 60%)
Pressure	5.0 bar
Compressed air consumption:	230 l/min