

About us

In the traditional and strive industry region Chemnitz-Zwickau, directly at the freeway A72 you will find the new location of the Pulsotronic GmbH & Co.KG.

As a worldwide active company we develop and produce according to ISO 9001 proximity switches and electronic components for the following product ranges:

- > Inductive and Capacitive Sensors
- > Metal separation and Metal detection
- > Picture Processing
- > Optical Sensors
- > Magnetoresistive Sensors
- > Laser Systems
- > Colour Detection
- > Ultrasonic Sensors
- > X-Ray- Scanner

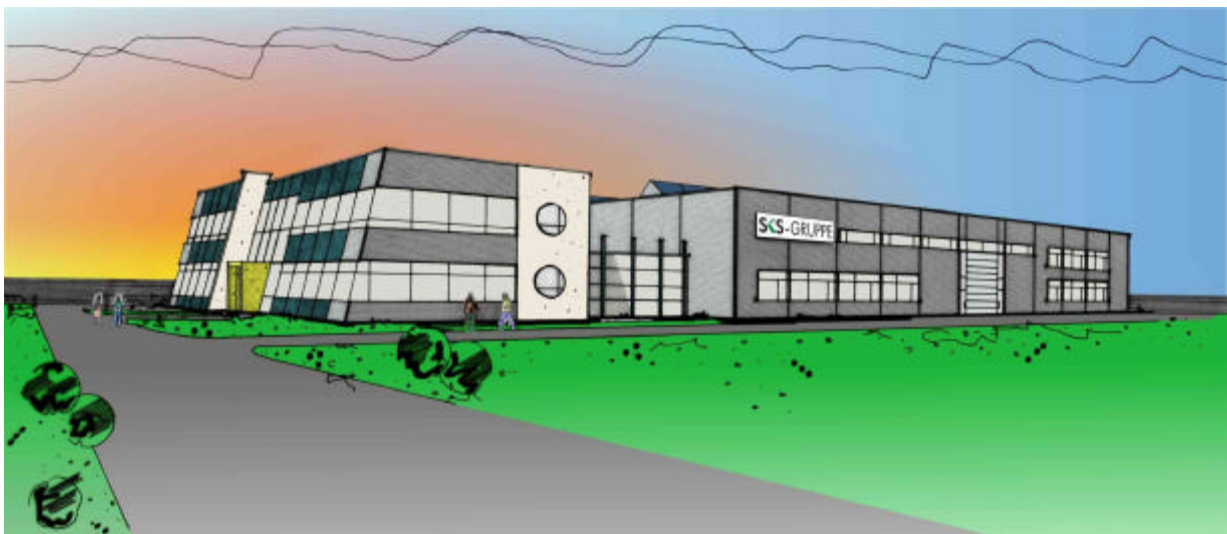
We guarantee customized solutions by our high-performance profile in the area. The available wide palette of key technologies is an ideal condition for the realization of your application.

You find the Pulsotronic everywhere there, where are to set standards and to solve task positions on the far side of well known standing types.

With innovation and individualism our competent team will advise also on place to solve your problem.

Demand us, than you will also find out:

„Pulsotronic - Here is the solution.“

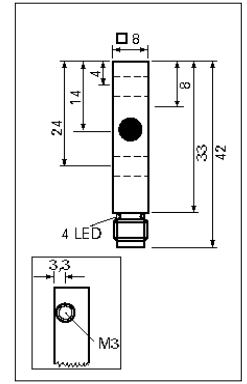
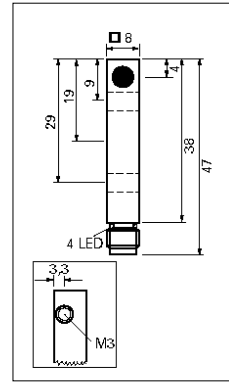
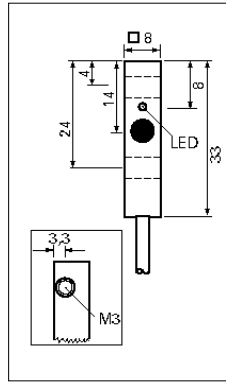
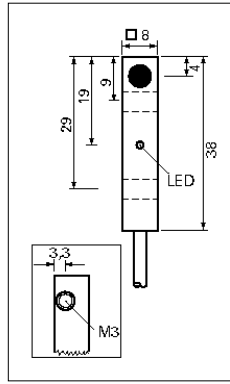


K J 10 - M 30 M B 45 - D P S - V1 - X0000
T T T T T T T T T T T T
1 2 3 4 5 6 7 8 9 10 11 12

1= Working principle:	J	inductive	JR	inductive ring
			JF	inductive surface
			JG	inductive slot
			JD	full metal
	C	capacitive		
	M	magneto-resistive		
2= Switching distance / range				
3= Design:	M	cylindrical housings with metrical thread		
	G	cylindrical housings without thread		
	Q	square housings		
	D	ring housings		
4=Housing diameter / edge length				
5= Housing material:	M	brass, nickel plated	11= Kind of Connection:	V1 M8 screw / snap in
	E	stainless steel 1.4305		V2 M12 metal
	K	plastic		V2/1 M12 plastic
	A	aluminium		V3 M5 metal
6= installation type:	B	shielded		V4 Amphenol Tuchel
	N	non shielded		V6 Brad Harrison
7= Tube length:		for cylindrical devices in mm		V7 valve connector type A
8= Operating voltage:	D	DC direct-current voltage		V8 M8 only snap in
	AZ	AC alternating-current voltage		V9 M12 only snap in
	VZ	AC/DC all voltages		V10 valve connector type C
				V11 AC-connector 1/2" UNF
				V12 M18 plastic
				VE Euchner connector
				ZW termination box 90°
				RS232 data interface
				PG thread joint PG
				Mxx thread joint metrical
9= Type of the output signal:	P	FNP		more at inquiry
	N	NPN		
	Z	two-wire		
	AN	analog	ANI	current output
			ANU	voltage output
	NA	Namur		
10= Function:	S	N.O.		
	Ö	N.C.		
	A	changeover		
	U	switchable		
	I	impulse output		
	D	data interface		
12= Addition mark:	SF	weld field immune		
	T	high temperature		
	FE	reduction 1 to steel/iron		
	NF	reduction 1 to aluminium		
	X	customized design		
	W	angled sensing face / angled cable exit		
	AM	middle sensing face		

Proximity switch - Connection pictures

wiring diagrams	cable- / clampconnection	connector V1 ... V9
DPS DC PNP N.O.		
DPÖ DC PNP N.C.		
DPA DC PNP changeover		
DPU DC NO/NC switchable		
DNS DC NPN N.O.		
DNÖ DC NPN N.C.		
DNA DC NPN changeover		
DNU DC NO/NC switchable		
NA Namur DIN 19234		
DZS DC 2-wire N.O.		
DZÖ DC 2-wire N.C.		
AZS / VZS AC/DC 2-wire N.O.		
AZÖ / VZÖ AC/DC 2-wire N.C.		
Analog		



Switching Distance
Mounting

2,0 mm
Shielded

2,0 mm
Shielded

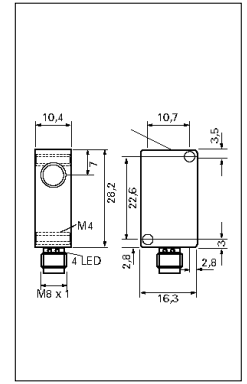
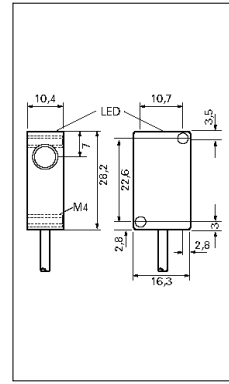
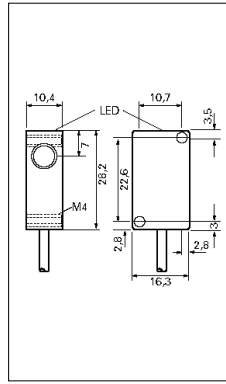
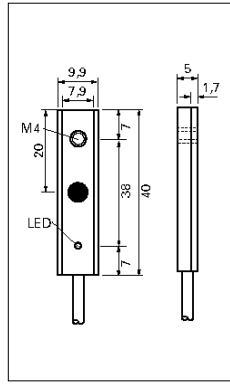
2,0 mm
Shielded

2,0 mm
Shielded

	Type	Type	Type	Type
PNP Normally Open	KJ2-Q8AB-DPS	KJ2-Q8AB-DPS-AM	KJ2-Q8AB-DPS-V1	KJ2-Q8AB-DPS-V1-AM
PNP Normally Close	KJ2-Q8AB-DPÖ	KJ2-Q8AB-DPÖ-AM	KJ2-Q8AB-DPÖ-V1	KJ2-Q8AB-DPÖ-V1-AM
NPN Normally Open				
NPN Normally Close				
PNP Changeover				
NPN Changeover				
Operating Voltage U_b	10 - 30 VDC	10 - 30 VDC	10 - 30 VDC	10 - 30 VDC
Ripple Voltage U_b	≤ 10 %	≤ 10 %	≤ 10 %	10 %
Voltage Drop U_d	≤ 3,0 V	≤ 3,0 V	≤ 3,0 V	≤ 3,0 V
Max. Load Current I_o	200 mA	200 mA	200 mA	200 mA
Off-State Current I_o	≤ 15 mA	≤ 15 mA	≤ 15 mA	≤ 15 mA
Leakge Current I_r	≤ 10 µA	≤ 10 µA	≤ 10 µA	≤ 10 µA
Switching Frequency f	1000 Hz	1000 Hz	1000 Hz	1000 Hz
Hysteresis H	≤ 15 % (Sr)	≤ 15 % (Sr)	≤ 15 % (Sr)	≤ 15 % (Sr)
Operating Temperature T_a	-25°C ... +70°C	-25°C ... +70°C	-25°C ... +70°C	-25°C ... +70°C
Temperature Drift	≤ 10 % (Sr)	≤ 10 % (Sr)	≤ 10 % (Sr)	≤ 10 % (Sr)
Repeat Accuracy R	≤ 2 % (Sr)	≤ 2 % (Sr)	≤ 2 % (Sr)	≤ 2 % (Sr)
Protection Class	IP 67	IP 67	IP 67	IP 67
Switching State	LED	LED	LED	LED
EMC-Standard	IEC 60947-5-2	IEC 60947-5-2	IEC 60947-5-2	IEC 60947-5-2
Housing Material	Aluminium	Aluminium	Aluminium	Aluminium
Front Cap	PA 6.6	PA 6.6	PA 6.6	PA 6.6
Termination	Cable 3 x 0,14	Cable 3 x 0,14	M8 3-pol. Connector	M8 3-pol. Connector

More special versions by separate inquiries!

Connection and Termination picture at page 3.



Switching Distance
Mounting

2,0 mm
Shielded

2,0 mm
Shielded

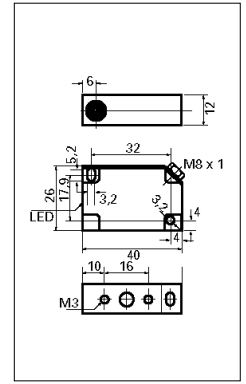
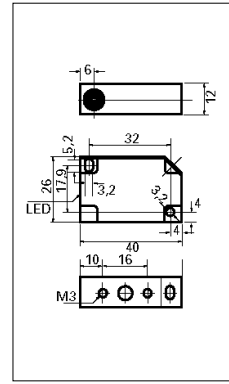
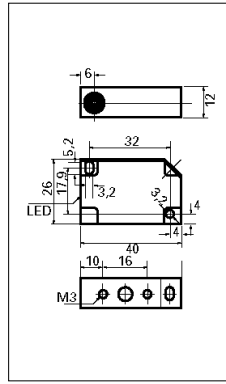
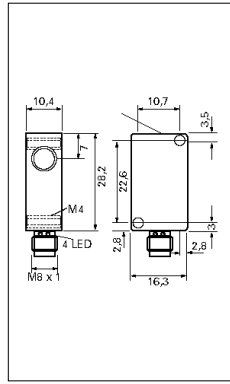
4,0 mm
Non - Shielded

2,0 mm
Shielded

	Type	Type	Type	Type
PNP Normally Open	KJ2-Q9,9AB-DPS	KJ2-Q28KB-DPS	KJ4-Q28KN-DPS	KJ2-Q28KB-DPS-V1
PNP Normally Close	KJ2-Q9,9AB-DPÖ	KJ2-Q28KB-DPÖ	KJ4-Q28KN-DPÖ	KJ2-Q28KB-DPÖ-V1
NPN Normally Open				
NPN Normally Close				
PNP Changeover				
NPN Changeover				
Operating Voltage U_b	10 - 30 VDC	10 - 30 VDC	10 - 30 VDC	10 - 30 VDC
Ripple Voltage U_b	≤ 10 %	≤ 10 %	≤ 10 %	10 %
Voltage Drop U_d	≤ 3,0 V	≤ 3,0 V	≤ 3,0 V	≤ 3,0 V
Max. Load Current I_o	200 mA	200 mA	200 mA	200 mA
Off-State Current I_o	≤ 15 mA	≤ 15 mA	≤ 15 mA	≤ 15 mA
Leakge Current I_r	≤ 10 µA	≤ 10 µA	≤ 10 µA	≤ 10 µA
Switching Frequency f	1000 Hz	400 Hz	400 Hz	400 Hz
Hysteresis H	≤ 15 % (Sr)	≤ 15 % (Sr)	≤ 15 % (Sr)	≤ 15 % (Sr)
Operating Temperature T_a	-25°C ... +70°C	-25°C ... +70°C	-25°C ... +70°C	-25°C ... +70°C
Temperature Drift	≤ 10 % (Sr)	≤ 10 % (Sr)	≤ 10 % (Sr)	≤ 10 % (Sr)
Repeat Accuracy R	≤ 2 % (Sr)	≤ 2 % (Sr)	≤ 2 % (Sr)	≤ 2 % (Sr)
Protection Class	IP 67	IP 67	IP 67	IP 67
Switching State	LED	LED	LED	LED
EMC-Standard	IEC 60947-5-2	IEC 60947-5-2	IEC 60947-5-2	IEC 60947-5-2
Housing Material	Aluminium	Polycarbonate	Polycarbonate	Polycarbonate
Front Cap	PA 6.6	-	-	-
Termination	Cable 3 x 0,14	Cable 3 x 0,14	Cable 3 x 0,14	M8 3-pol. Connector

More special versions by separate inquiries!

Connection and Termination picture at page 3.



Switching Distance

4,0 mm

2,0 mm

4,0 mm

2,0 mm

Mounting

Non - Shielded

Shielded

Non - Shielded

Shielded

Type

Type

Type

Type

PNP Normally Open

KJ4-Q28KN-DPS-V1

KJ2-Q12KB-DPS

KJ4-Q12KN-DPS

KJ2-Q12KB-DPS-V1

PNP Normally Close

KJ4-Q28KN-DPÖ-V1

KJ2-Q12KB-DPÖ

KJ4-Q12KN-DPÖ

KJ2-Q12KB-DPÖ-V1

NPN Normally Open

KJ2-Q12KB-DNS

KJ4-Q12KN-DNS

NPN Normally Close

PNP Changeover

NPN Changeover

Operating Voltage U_b

10 - 30 VDC

10 - 35 VDC

10 - 35 VDC

10 - 35 VDC

Ripple Voltage U_b

$\leq 10 \%$

$\leq 10 \%$

$\leq 10 \%$

10 %

Voltage Drop U_d

$\leq 3,0 \text{ V}$

$\leq 2,4 \text{ V}$

$\leq 2,4 \text{ V}$

$\leq 2,4 \text{ V}$

Max. Load Current I_o

200 mA

200 mA

200 mA

200 mA

Off-State Current I_o

$\leq 15 \text{ mA}$

$\leq 10 \text{ mA}$

$\leq 10 \text{ mA}$

$\leq 10 \text{ mA}$

Leakge Current I_r

$\leq 10 \mu\text{A}$

$\leq 10 \mu\text{A}$

$\leq 10 \mu\text{A}$

$\leq 10 \mu\text{A}$

Switching Frequency f

400 Hz

1500 Hz

1000 Hz

1500 Hz

Hysteresis H

$\leq 15 \%$ (Sr)

$\leq 15 \%$ (Sr)

$\leq 15 \%$ (Sr)

$\leq 15 \%$ (Sr)

Operating Temperature T_a

-25°C ... +70°C

-25°C ... +70°C

-25°C ... +70°C

-25°C ... +70°C

Temperature Drift

$\leq 10 \%$ (Sr)

$\leq 10 \%$ (Sr)

$\leq 10 \%$ (Sr)

$\leq 10 \%$ (Sr)

Repeat Accuracy R

$\leq 2 \%$ (Sr)

$\leq 2 \%$ (Sr)

$\leq 2 \%$ (Sr)

$\leq 2 \%$ (Sr)

Protection Class

IP 67

IP 67

IP 67

IP 67

Switching State

LED

LED

LED

LED

EMC-Standard

IEC 60947-5-2

IEC 60947-5-2

IEC 60947-5-2

IEC 60947-5-2

Housing Material

Polycarbonate

Polycarbonate

Polycarbonate

Polycarbonate

Front Cap

-

-

-

-

Termination

M8 3-pol. Connector

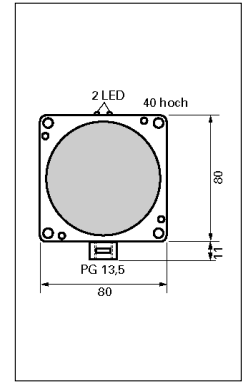
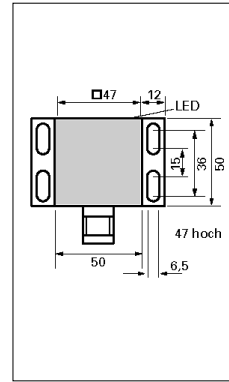
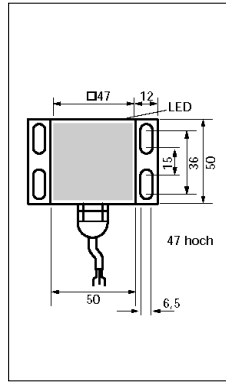
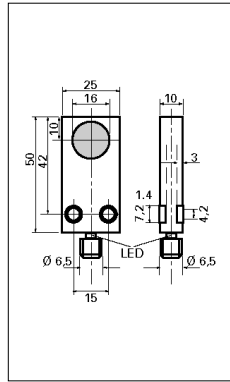
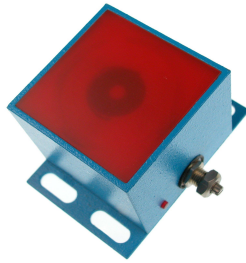
Cable 3 x 0,14

Cable 3 x 0,14

M8 3-pol. Connector

More special versions by separate inquiries!

Connection and Termination picture at page 3.



Switching Distance
Mounting

8,0 mm
Non - Shielded

40,0 mm
Shielded

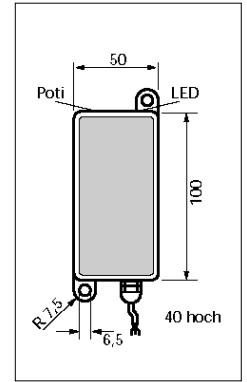
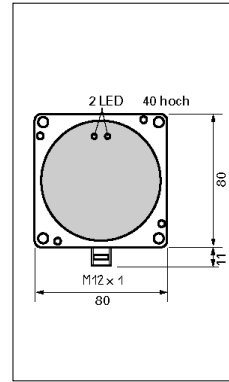
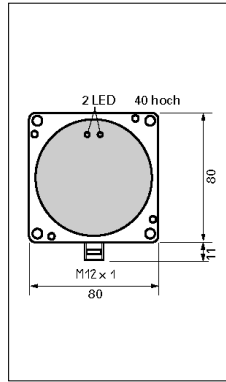
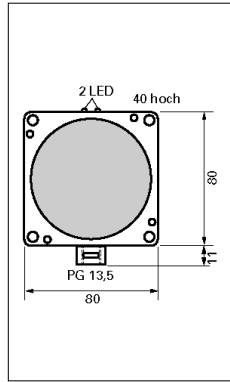
40,0 mm
Shielded

40,0 mm
Shielded

	Type	Type	Type	Type
PNP Normally Open	KJ8-Q25KN-DPS-V1	KJ40-Q50AB-DPS	KJ40-Q50AB-DPS-V2	
PNP Normally Close	KJ8-Q25KN-DPÖ-V1			
NPN Normally Open		KJ40-Q50AB-DNS	KJ40-Q50AB-DNS-V2	
NPN Normally Close				
PNP Changeover				KJ40-Q80KB-DPA
NPN Changeover				
Operating Voltage U_b	10 - 30 VDC	10 - 30 VDC	10 - 30 VDC	10 - 30 VDC
Ripple Voltage U_b	≤ 10 %	≤ 10 %	≤ 10 %	10 %
Voltage Drop U_d	≤ 3,0 V	≤ 2,4 V	≤ 2,4 V	≤ 3,0 V
Max. Load Current I_o	200 mA	400 mA	400 mA	200 mA
Off-State Current I_o	≤ 15 mA	≤ 18 mA	≤ 18 mA	≤ 22 mA
Leakge Current I_r	≤ 10 µA	≤ 10 µA	≤ 10 µA	≤ 10 µA
Switching Frequency f	400 Hz	300 Hz	300 Hz	100 Hz
Hysteresis H	≤ 15 % (Sr)	≤ 15 % (Sr)	≤ 15 % (Sr)	≤ 10 % (Sr)
Operating Temperature T_a	-25°C ... +70°C	-25°C ... +70°C	-25°C ... +70°C	-25°C ... +70°C
Temperature Drift	≤ 10 % (Sr)	≤ 10 % (Sr)	≤ 10 % (Sr)	≤ 10 % (Sr)
Repeat Accuracy R	≤ 2 % (Sr)	≤ 2 % (Sr)	≤ 2 % (Sr)	≤ 2 % (Sr)
Protection Class	IP 67	IP 67	IP 67	IP 67
Switching State	LED	LED	LED	LED
EMC-Standard	IEC 60947-5-2	IEC 60947-5-2	IEC 60947-5-2	IEC 60947-5-2
Housing Material	Polycarbonate	Aluminium	Aluminium	Polycarbonate
Front Cap	-	Drovidur	Drovidur	-
Termination	M8 3-pol. Connector	Cable 3 x 0,34	M12 4-pol. Connector	Cable 3 x 0,34

More special versions by separate inquiries!

Connection and Termination picture at page 3.



Switching Distance
Mounting

50,0 mm
Non - Shielded

40,0 mm
Shielded

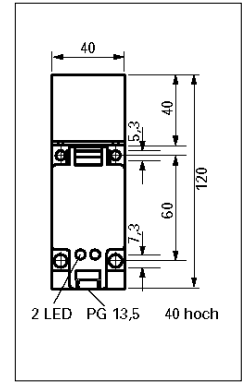
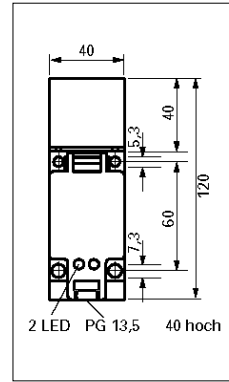
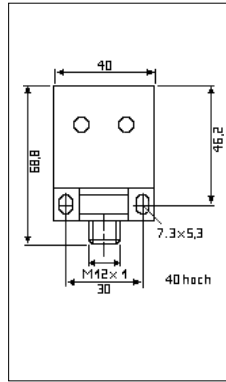
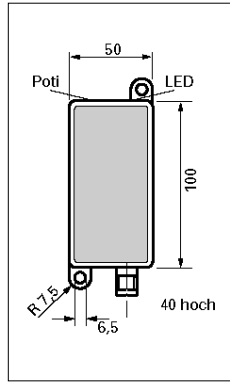
50,0 mm
Non - Shielded

70,0 mm
Non - Shielded

	Type	Type	Type	Type
PNP Normally Open				KJ70-Q100AN-DPS-F1
PNP Normally Close				
NPN Normally Open				KJ70-Q100AN-DNS-F1
NPN Normally Close				
PNP Changeover	KJ50-Q80KN-DPA	SJ40-Q80KB-DPA-V2	SJ50-Q80KN-DPA-V2	
NPN Changeover				
Operating Voltage U_b	10 - 30 VDC	10 - 30 VDC	10 - 30 VDC	10 - 30 VDC
Ripple Voltage U_b	$\leq 10 \%$	$\leq 10 \%$	$\leq 10 \%$	10 %
Voltage Drop U_d	$\leq 2,4 \text{ V}$	$\leq 2,4 \text{ V}$	$\leq 2,4 \text{ V}$	$\leq 2,4 \text{ V}$
Max. Load Current I_o	200 mA	200 mA	200 mA	400 mA
Off-State Current I_o	$\leq 22 \text{ mA}$	$\leq 22 \text{ mA}$	$\leq 22 \text{ mA}$	$\leq 12 \text{ mA}$
Leakge Current I_r	$\leq 10 \mu\text{A}$	$\leq 10 \mu\text{A}$	$\leq 10 \mu\text{A}$	$\leq 10 \mu\text{A}$
Switching Frequency f	100 Hz	100 Hz	100 Hz	300 Hz
Hysteresis H	$\leq 10 \%$ (Sr)	$\leq 10 \%$ (Sr)	$\leq 10 \%$ (Sr)	$\leq 15 \%$ (Sr)
Operating Temperature T_a	-25°C ... +70°C	-25°C ... +70°C	-25°C ... +70°C	-25°C ... +70°C
Temperature Drift	$\leq 10 \%$ (Sr)	$\leq 10 \%$ (Sr)	$\leq 10 \%$ (Sr)	$\leq 10 \%$ (Sr)
Repeat Accuracy R	$\leq 2 \%$ (Sr)	$\leq 2 \%$ (Sr)	$\leq 2 \%$ (Sr)	$\leq 2 \%$ (Sr)
Protection Class	IP 67	IP 67	IP 67	IP 67
Switching State	LED	LED	LED	LED
EMC-Standard	IEC 60947-5-2	IEC 60947-5-2	IEC 60947-5-2	IEC 60947-5-2
Housing Material	Polycarbonate	Polycarbonate	Polycarbonate	Aluminium
Front Cap	-	-	-	-
Termination	Cable 3 x 0,34	M12 4-pol. Connector	M12 4-pol. Connector	Cable 3 x 0,34

More special versions by separate inquiries!

Connection and Termination picture at page 3.



Switching Distance
Mounting

70,0 mm
Non - Shielded

15,0 mm
Shielded

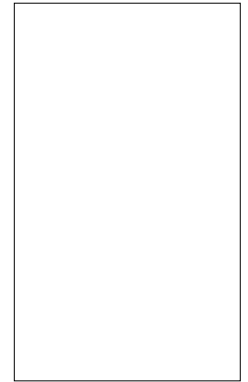
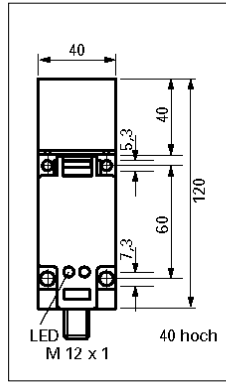
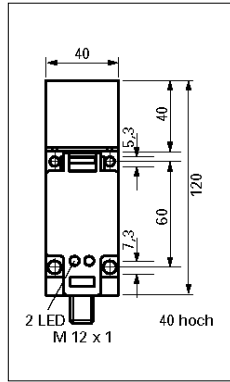
20,0 mm
Shielded

20,0 mm
Shielded

	Type	Type	Type	Type
PNP Normally Open	KJ70-Q100AN-DPS-V2-F1			
PNP Normally Close				
NPN Normally Open	KJ70-Q100AN-DNS-V2-F1			
NPN Normally Close				
PNP Changeover		SJ15-Q40KB40-DPA-V2	KJ20-Q40KB-DPA	KJ20-Q40KB-DPA-V2
NPN Changeover			KJ20-Q40KB-DNA	KJ20-Q40KB-DNA-V2
Operating Voltage U_b	10 - 30 VDC	10 - 30 VDC	10 - 30 VDC	10 - 30 VDC
Ripple Voltage U_b	$\leq 10 \%$	$\leq 10 \%$	$\leq 10 \%$	10 %
Voltage Drop U_d	$\leq 2,4 \text{ V}$	$\leq 1,5 \text{ V}$	$\leq 2,4 \text{ V}$	$\leq 2,4 \text{ V}$
Max. Load Current I_o	400 mA	200 mA	200 mA	200 mA
Off-State Current I_o	$\leq 12 \text{ mA}$	$\leq 10 \text{ mA}$	$\leq 15 \text{ mA}$	$\leq 15 \text{ mA}$
Leakge Current I_r	$\leq 10 \mu\text{A}$	$\leq 10 \mu\text{A}$	$\leq 10 \mu\text{A}$	$\leq 10 \mu\text{A}$
Switching Frequency f	300 Hz	100 Hz	100 Hz	100 Hz
Hysteresis H	$\leq 15 \%$ (Sr)	$\leq 15 \%$ (Sr)	$\leq 20 \%$ (Sr)	$\leq 20 \%$ (Sr)
Operating Temperature T_a	-25°C ... +70°C	-25°C ... +70°C	-25°C ... +70°C	-25°C ... +70°C
Temperature Drift	$\leq 10 \%$ (Sr)	$\leq 10 \%$ (Sr)	$\leq 10 \%$ (Sr)	$\leq 10 \%$ (Sr)
Repeat Accuracy R	$\leq 2 \%$ (Sr)	$\leq 1 \%$ (Sr)	$\leq 2 \%$ (Sr)	$\leq 2 \%$ (Sr)
Protection Class	IP 67	IP 67	IP 67	IP 67
Switching State	LED	LED	LED	LED
EMC-Standard	IEC 60947-5-2	IEC 60947-5-2	IEC 60947-5-2	IEC 60947-5-2
Housing Material	Aluminium	Polycarbonatet	Polycarbonate	Polycarbonate
Front Cap	-	PBT	-	-
Termination	M12 4-pol. Connector	M12 4-pol. Connector	Terminal 2,5 mm ²	M12 4-pol. Connector

More special versions by separate inquiries!

Connection and Termination picture at page 3.



Switching Distance

40,0 mm

40,0 mm

Mounting

Non - Shielded

Non - Shielded

Type

Type

PNP Normally Open

PNP Normally Close

NPN Normally Open

NPN Normally Close

PNP Changeover

KJ40-Q40KN-DPA

KJ40-Q40KN-DPA-V2

NPN Changeover

KJ40-Q40KN-DNA

KJ40-Q40KN-DNA-V2

Operating Voltage U_b

10 - 30 VDC

10 - 30 VDC

Ripple Voltage U_b

$\leq 10 \%$

$\leq 10 \%$

Voltage Drop U_d

$\leq 2,4 \text{ V}$

$\leq 2,4 \text{ V}$

Max. Load Current I_o

200 mA

200 mA

Off-State Current I_o

$\leq 15 \text{ mA}$

$\leq 15 \text{ mA}$

Leakge Current I_r

$\leq 10 \mu\text{A}$

$\leq 10 \mu\text{A}$

Switching Frequency f

100 Hz

100 Hz

Hysteresis H

$\leq 20 \%$ (Sr)

$\leq 20 \%$ (Sr)

Operating Temperature T_a

$-25^\circ\text{C} \dots +70^\circ\text{C}$

$-25^\circ\text{C} \dots +70^\circ\text{C}$

Temperature Drift

$\leq 10 \%$ (Sr)

$\leq 10 \%$ (Sr)

Repeat Accuracy R

$\leq 2 \%$ (Sr)

$\leq 2 \%$ (Sr)

Protection Class

IP 67

IP 67

Switching State

LED

LED

EMC-Standard

IEC 60947-5-2

IEC 60947-5-2

Housing Material

Polycarbonate

Polycarbonate

Front Cap

-

-

Termination

Terminal 2,5 mm²

M12 4-pol. Connector

More special versions by separate inquiries!

Connection and Termination picture at page 3.

A large empty rectangular box with a black border, intended for taking notes.

Table of Contents

Type	Art-Nr.	Site	Type	Art-Nr.	Site
Q8			Q28		
KJ2-Q8AB-DPS	08310000475	4	KJ2-Q28KB-DPS	08310000042	5
KJ2-Q8AB-DPÖ	08310020475	4	KJ2-Q28KB-DPÖ	08310000437	5
KJ2-Q8AB-DPS-AM	08310000054	4	KJ2-Q28KB-DPS-V1	08310000608	5
KJ2-Q8AB-DPÖ-AM	08310000074	4	KJ2-Q28KB-DPÖ-V1	08310000632	5
KJ2-Q8AB-DPS-V1	08310000509	4	KJ4-Q28KN-DPS	08310000610	5
KJ2-Q8AB-DPÖ-V1	08310000409	4	KJ4-Q28KN-DPÖ	08310020076	5
KJ2-Q8AB-DPS-V1-AM	08310000369	4	KJ4-Q28KN-DPS-V1	08310000609	6
KJ2-Q8AB-DPÖ-V1-AM	08310021369	4	KJ4-Q28KN-DPÖ-V1	08310020184	6
Q9			Q40		
KJ2-Q9,9AB-DPS	08310000208	5	SJ15-Q40KB40-DPA-V2	08313401551	10
KJ2-Q9,9AB-DPÖ	08310000544	5	KJ20-Q40KB-DPA	08310002040	10
Q12			KJ20-Q40KB-DNA	08310004040	10
KJ2-Q12KB-DPS	08317613000	6	KJ20-Q40KB-DPA-V2	08310000038	11
KJ2-Q12KB-DPÖ	08317613400	6	KJ20-Q40KB-DNA-V2	08310021138	11
KJ2-Q12KB-DNS	08317613100	6	KJ40-Q40KN-DPA	08310020327	10
KJ2-Q12KB-DPS-V1	08317613064	6	KJ40-Q40KN-DNA	08310000050	10
KJ2-Q12KB-DPÖ-V1	08317613464	6	KJ40-Q40KN-DPA-V2	08310000039	11
KJ4-Q12KN-DPS	08317613200	6	KJ40-Q40KN-DNA-V2	08310021139	11
KJ4-Q12KN-DPÖ	08317613600	6	Q50		
KJ4-Q12KN-DNS	08317613300	6	KJ40-Q50AB-DPS	08317070900	8
KJ4-Q12KN-DPS-V1	08317613264	7	KJ40-Q50AB-DNS	08317070100	8
KJ4-Q12KN-DPÖ-V1	08317613664	7	KJ40-Q50AB-DPS-V2	08317070965	8
Q25			KJ40-Q50AB-DNS-V2	08317070165	8
KJ5-Q25KB-DPS	08310000772	7	Q80		
KJ5-Q25KB-DPÖ	08310020772	7	KJ40-Q80KB-DPA	08317651100	8
KJ8-Q25KN-DPS	08310000056	7	SJ40-Q80KB-DPA-V2	08317651165	9
KJ8-Q25KN-DPÖ	08310000348	7	KJ50-Q80KN-DPA	08317651000	9
KJ5-Q25KB-DPS-V1	08310000203	7	SJ50-Q80KN-DPA-V2	08317651065	9
KJ5-Q25KB-DPÖ-V1	08310000472	7	Q100		
KJ8-Q25KN-DPS-V1	08310000508	8	KJ70-Q100AN-DPS-F1	08316090100	9
KJ8-Q25KN-DPÖ-V1	08310020508	8	KJ70-Q100AN-DNS-F1	08317090300	9
			KJ70-Q100AN-DPS-V2-F1	08317090165	10
			KJ70-Q100AN-DNS-V2-F1	08317090365	10

AUSTRALIA

PCA Plant Control & Automation Pty
LTD
Unit 3 No. 3 Hunter Street
2077 Hornsby NSW
Tel. 00 61 / 29 48 23 73 3
Fax 00 61 / 29 47 66 82 2
E-mail: sales@pca-aus.com.au

CZECH REPUBLIC

Bibus S.R.O.
Videnská 125
63927 Brno
Tel. 00 42 / 05 47 12 53 24
Fax 00 42 / 05 47 12 53 10
E-mail: duchon@bibus.cz

FRANCE

Verco France
32, Rue Commandant Fuzier
Tel. 00 33 / 47 28 44 10 5
Fax 00 33 / 47 86 26 02 3
E-mail: verco@alyon.org

ITALY

Tritecnica S.R.L.
Viale Lazio 26
20135 Milano
Tel. 00 39 / 02-54 19 45 2
Fax 00 39 / 02-55 18 12 97
E-mail: info@tritecnica.it

NETHERLANDS

Solar Elektro B.V.
Effect 5
6921 RG Duiven
Tel. 00 31 / 26 36 52 91
Fax 00 31 / 26 36 52 34 6
E-mail: algemeen@beng.nl

SPAIN

Automatica Electronica
Y Control S.L.
08018 Barcelona
Tel. 00 34 / 93 48 50 034
Fax 00 34 / 93 48 50 296
E-mail: p.dalmases@automatica-elec.es

SWEDEN

Tillquist Elteknik AB
Finlandsgatan 16
16422 Kista
Tel. 00 46 / 8-59 46 32 00
Fax 00 46 / 8-75 13 69 5
E-mail: info@tillquisteltechnik.se

SWITZERLAND

Ymatron AG
Brüelstraße 7
8157 Dielsdorf
Tel. 0041 / 18 55 23 88
Fax 0041 / 18 55 23 81
Email: info@ymatron.ch

USA

Altech Corp.
35 Royal Road
08822 Flemington NJ-6000
Tel. 00 1 / 90 88 06 94 00
Fax 00 1 / 90 88 06 94 9
E-mail: info@altechcorp.com

BELGIUM

Bintz Technics N.V.
Business Park
Brixtonlaan 25
1930 Zaventem
Tel. 00 32 / 27 20 49 16
Fax 00 32 / 27 20 37 50
E-Mail: beyens@bintz-technics.be

DENMARK

Scancomp
Bøgedals Allé 18
DK 5250 Odense SV
Tel. 00 45 / 66 11 29 89
Fax 00 45 / 66 11 29 63
E-mail: mh@scancomp.dk
Internet: www.scancomp.dk

GREECE

Panayiotis Vassiliou S.A.
91, Achamon
10440 Athen
Te. 00 30 / 21 05 22 27 11
Fax 0030 / 21 05 24 67 5
E-mail: vasben@otenet.gr

JAPAN

System Electronic Co. Ltd.
2-13-3 Yayoi- Bunkyo-Ku
Tokyo
Tel. 0081 / 3 5803 7151
Fax 0081 / 3 5803 7152
E-mail: Isao@system-electronic-japan.co.jp

POLAND

P.W. Romex
Roman Siecla
UL. Wzlotowa 5
60411 Poznan
Tel. 00 48 / 61 84 17 82 4
Fax 00 48 / 61 84 36 34 3
E-mail: siecla.r@pwrromex.com.pl

SOUTH KOREA

EURO Corperation
Room Nr. 103
Tae Sung BLDG 199-1
Jangsa-Dorg Jongro-Ku
Tel. 00 82 / 2-22 63 14 96 7
Fax 00 82 / 2-22 63 14 98
E-mail: europilz@chol.com

SWITZERLAND

Quarz AG
Wiesenstraße 2
8617 Mönchaltorf
Tel. 00 41 / 19 48 18 48
Fax 00 41 / 19 48 09 09
E-mail: robo@quarz.ch

SOUTH AFRICA

Countapulse Controls
Pty. Ltd.
P.O. Box 40393
Cleveland, 2022
Tel. 00 27 / 11-61 57 55 6
Fax 00 27 / 11-61 57 51 3
E-mail: clive@countapulse.co.za

CANADA

Sircon Controls Ltd.
5359 Timberlea Blvd., Unit 36
L4W4N5 Ontario
Tel. 00 1 / 90 5-23 89 50 5
Fax 00 1 / 90 5-23 88 38 0
E-mail: info@sirconcontrols.co

FINLAND

SKS-Automaatio Oy
Martinkyläntie 50
01721 Vantaa
Tel. 00 35 8 / 9-85 26 61
Fax 00 35 8 / 9-85 26 82 0
E-mail: sks-automaatio@sks.fi

ISRAEL

E.I.D. Electronics Ltd.
5, Saphir Street
Ramat Gan, 52622
Tel.00 97 / 2-3-53 43 38 0
Fax 00 97 / 2-3-53 43 38 5
E-mail: eidelec@attglobal.net

NETHERLANDS

SEN-TECH Benelux B.V.
Middelweg 8 e
5253 CA Nieuwkuijk
Tel. 00 31 / 73 51 83 12 1
Fax 00 31 / 73 51 83 12 2
E-mail: info@sentech.nl

SLOVAKIA

Bibus SK S.R.O.
Priemyselna 4
94901 Nitra
Tel. 00 42 / 1-3 77 41 25 25
Fax 0042 / 1-3 77 51 67 01
E-mail: gyenes@bibus.sk

SWEDEN

Octab Industrieelektronik AB
Leif Bergquist
Maskingatan 8B
19560 Märsta
Tel. 00 46 / 8-59 11 50 00
Fax 00 46 / 8-59 11 50 01
Email:info@octab.se

SWITZERLAND

Spälti Schaltgeräte AG
Wässerstraße 25
8340 Hinwil
Tel. 00 41 / 1-93 88 09 0
Fax 00 41 / 1-93 88 09 1
E-mail: spaelti-ag@swissonline.ch

TAIWAN

DWO & TOM Enterprise Co.
Majestic Trading Co. Ltd.
No. 178-4-Sec. 2
Chang an E. Road
Taipei Taiwan R.O.C.
Tel. 00 88 6 / 22 75 28 15 1
Fax 00 88 6 / 22 75 11 86 8
E-mail: dwotom@so-net.tw

Distribution office:

Postcode area:
16, 17, 18, 19, 20-29,
30, 31, 32, 38, 39, 49
Uwe Reisewitz
Waakhauserstraße 9
D-28719 Bremen
Phone: +49 4 21 / 64 26 44
Fax: +49 4 21 / 64 40 28 1
Mobile: +49 1 71 / 63 75 86 8

Postcode area:
40, 41, 42, 44, 45, 46, 47, 48,
50, 51, 52, 53, 54, 55, 56
Christoph Gilgenberg
Pascalstraße 22
D-53840 Troisdorf
Phone: +49 22 41 / 97 41 24
Fax: +49 22 41 / 97 30 63
Mobile: +49 1 71 / 63 75 86 6

Postcode area:
33-37, 57, 58, 59, 60,
61, 63, 64, 65, 68, 69
Konrad Wiegand
Am Heydewolf 6
D-35274 Kirchhain
Phone: +49 64 22 / 92 29 23
Fax: +49 64 22 / 92 29 24
Mobile: +49 1 71 / 63 75 86 3

Postcode area:
01-04, 08-10, 12, 13,
14, 15
Mark Braun
Neue Schichtstraße 14
D-09366 Niederdorf
Phone: +49 3 72 96 / 930 203
Fax: +49 3 72 96 / 930 187
Mobile: +49 1 71 / 637 58 57

Postcode area:
66, 67, 77, 78,
79, 721, 722
SKA Tec GmbH & Co. KG
Dieter Schley
Alemannenstraße 53
D-77767 Appenweiler
Phone.: +49 78 05 / 99 85 0
Fax: +49 78 05 / 91 02 55

Postcode area:
80, 81, 82, 83, 84, 85,
90, 91, 92, 93, 94
Adolf Hutner
Ascherbachweg 2a
D-85232 Neuhimmelreich
Phone: +49 81 31 / 35 08 73
Fax: +49 81 31 / 35 08 72
Mobile: +49 1 71 / 63 75 86 2

Postcode area:
92, 93, 95, 96, 97
C + R Automation GmbH
Christian Rott
Weinzierleiner Straße 9
D-90513 Zirndorf
Phone: +49 9 11 / 60 43 67
Fax: +49 9 11 / 600 24 09
Mobile: +49 1 70 / 798 72 39

Postcode area:
70, 71, 72, 73, 74, 75,
76, 86, 87, 88, 89
Andreas Barth
Vogelstraße 15
D-89269 Vöhringen
Phone: +49 73 06 / 92 40 82
Fax: +49 73 06 / 92 24 61
Mobile: +49 1 71 / 63 75 85 6

Postcode area:
06, 07, 98, 99
Riese Electronic GmbH
Thomas Schüler
Schleizerstraße 36 - 38
D-07937 Zeulenroda
Phone: +49 3 66 28 / 725 11
Fax: +49 3 66 28 / 725 17
Mobile: +49 1 72 / 367 13 62



p-u-l-s-o-t-r-o-n-i-c

Pulsotronic GmbH & Co. KG

Neue Schichtstraße 14

D-09366 Niederdorf

Phone +49 37 296 / 930 100

Telefax +49 37 296 / 930 180

info@pulsotronic.de

www.pulsotronic.de