

	Flachstecker schraubbar und schweisssbar Languettes vissable et soudable Tabs screwable and weldable		3.002
	Steckerleisten Barrettes à languettes Tab blocks		3.021
	Kabelschuhe Cosses de câble Cable terminals		3.027
	Verbinder Connecteurs Solderless splices		3.051
	Kabel-Klipsen / Aderendhülsen Clips / Embouts de fil Clips / Ferrules		3.057
	Aderendhülsen isoliert Embouts de fils pré-isolés Ferrules insulated		3.061
	Steckhülsen und Steckverteiler Clips femelles et raccords mixtes Receptacles and multi connectors	2,8 mm 4,8 mm	3.067
	Steckhülsen und Steckverteiler Clips femelles et raccords mixtes Receptacles and multi connectors	6,3 mm 7,7 mm 9,5 mm	3.071
	Isoliertüllen Douilles Housings		3.077
	Steckhülsen und Flachstecker isoliert Clips femelles et languettes plates isolés Receptacles and taps insulated		3.080
	Steckhülsen am Band Clips pour picots en bande Receptacles for pins in chain form		3.091
	Rundstecker / Abzweigklemmen Prises cylindriques / Bornes de branchement Pin connectors / Branch terminals		3.097
	Dosen und Sortimente Boîtes et assortiments Boxes and sets		3.101

Flachstecker schraubbar und schweisssbar 2,8 mm

Languettes vissable et soudable

Tabs screwable and weldable

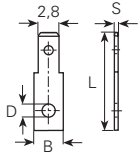
Masse im Steckbereich
DIN46342, Teil 1

Dimensions zone
d'emboîtement selon
DIN46342, partie 1

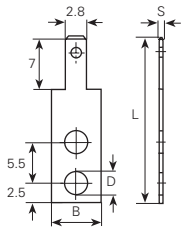
Dimensions in the tab sector
DIN46342, part 1

Werkstoff/Matière/Material
.6 = Messing/laiton/brass

■ = Oberflächen/Surface/Surface-plating
Seite/page/page 5.011



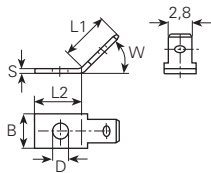
øD mm	B mm	L mm	S mm	Artikelnummer Numéro d'article Part-No.
2.2	4.5	13	0.5	3772.6■
	4.5	13	0.8	3770.6■
3.2	4.5	13	0.5	3770105.6■
	4.5	13	0.8	37701.6■



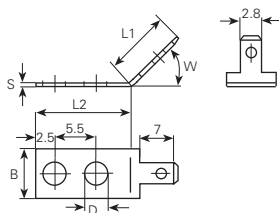
øD mm	B mm	L mm	S mm	Artikelnummer Numéro d'article Part-No.
3	6.5	21.5	0.5	3778t05.6■
	6.5	21.5	0.8	3778t08.6■
	5	19	0.5	3778u05.6■
	5	19	0.8	3778u08.6■

Werkstoff/Matière/Material
.6 = Messing/laiton/brass

■ = Oberflächen/Surface/Surface-plating
Seite/page/page 5.011



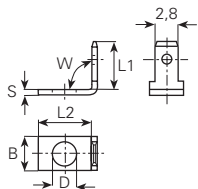
øD mm	B mm	L1 mm	L2 mm	W mm	S mm	Artikelnummer Numéro d'article Part-No.
2.2	4.5	5.6	7	45°	0.8	3774.6■
	4.5	5.6	7	50°	0.5	377705.6■
3.2	4.5	5.6	7	30°	0.5	3777k.6■
	4.5	5.6	7	60°	0.8	3777.6■
	4.5	8.5	7	50°	0.8	3777s.6■
	4.5	5.6	7	50°	0.8	3777.6■



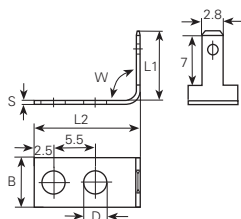
øD mm	B mm	L1 mm	L2 mm	W mm	S mm	Artikelnummer Numéro d'article Part-No.
3	6.5	8.7	12.5	45°	0.5	3778t4505.6■
	6.5	8.7	12.5	45°	0.8	3778t4508.6■
	5	8.2	10.5	45°	0.5	3778u4505.6■
	5	8.2	10.5	45°	0.8	3778u4508.6■

Werkstoff/Matière/Material
.6 = Messing/laiton/brass
.9 = Stahl/acier/steel

■ = Oberflächen/Surface/Surface-plating
Seite/page/page 5.011



øD mm	B mm	L1 mm	L2 mm	W mm	S mm	Artikelnummer Numéro d'article Part-No.
2.2	4.5	6	6.5	90°	0.8	3776.6■
3.2	4.5	6	6.5	90°	0.8	3778.6■
	4.5	6	6.5	90°	0.8	3778.9■



øD mm	B mm	L1 mm	L2 mm	W mm	S mm	Artikelnummer Numéro d'article Part-No.
3	6.5	8.7	12.5	90°	0.5	3778t9005.6■
	6.5	8.7	12.5	90°	0.8	3778t9008.6■
	5	8.2	10.5	90°	0.5	3778u9005.6■
	5	8.2	10.5	90°	0.8	3778u9008.6■

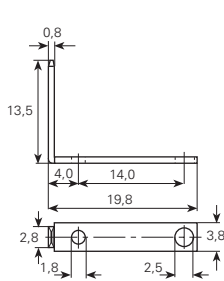
Werkstoff/Matière/Material
 .2 = Bronze/bronze
 .6 = Messing/laiton/brass
 .7 = Neusilber/mailechort/german silver
 .9 = Stahl/acier/steel

■ = Oberflächen/Surface/Surface-plating
 Seite/page/page 5.011

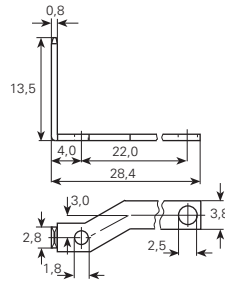
special

spécial

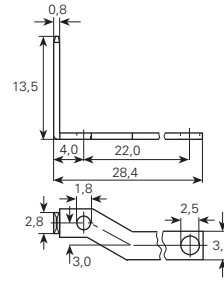
special



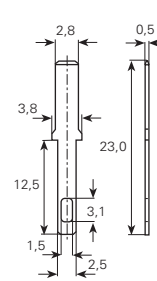
Artikelnummer
 Numéro d'article
 Part-No. **1026c.6**



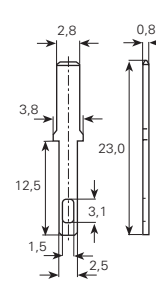
Artikelnummer
 Numéro d'article
 Part-No. **1026d.6**



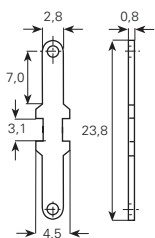
Artikelnummer
 Numéro d'article
 Part-No. **1026e.6**



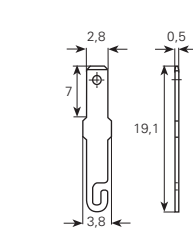
Artikelnummer
 Numéro d'article
 Part-No. **3770b05.2**



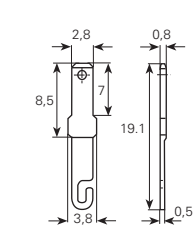
Artikelnummer
 Numéro d'article
 Part-No. **3770b08.6**



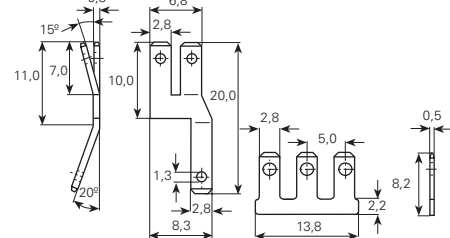
Artikelnummer
 Numéro d'article
 Part-No. **3770d.6**



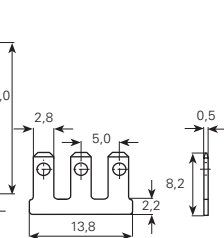
Artikelnummer
 Numéro d'article
 Part-No. **3770h05.6**



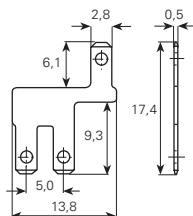
Artikelnummer
 Numéro d'article
 Part-No. **3770h08.6**



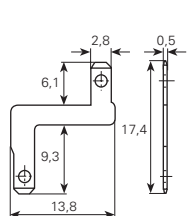
Artikelnummer
 Numéro d'article
 Part-No. **37843.6**



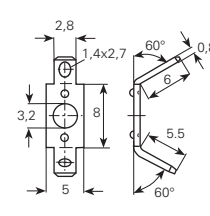
Artikelnummer
 Numéro d'article
 Part-No. **3784b.6**



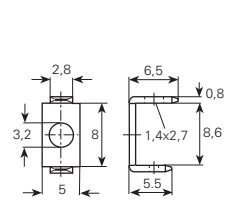
Artikelnummer
 Numéro d'article
 Part-No. **3784g.6**



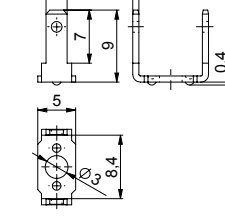
Artikelnummer
 Numéro d'article
 Part-No. **3784s.6**



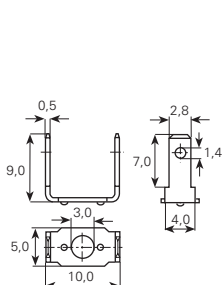
Artikelnummer
 Numéro d'article
 Part-No. **3786.6**



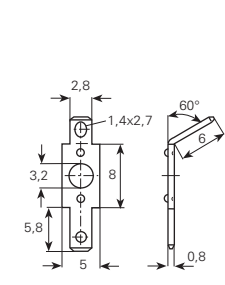
Artikelnummer
 Numéro d'article
 Part-No. **3786a.6**



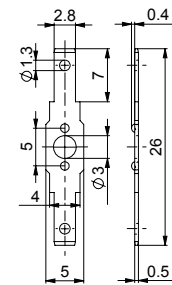
Artikelnummer
 Numéro d'article
 Part-No. **3786b.2**



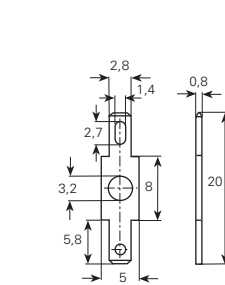
Artikelnummer
 Numéro d'article
 Part-No. **3786j.6**



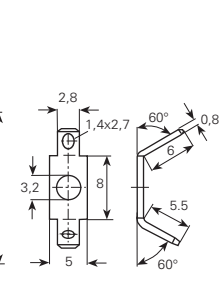
Artikelnummer
 Numéro d'article
 Part-No. **3786m.6**



Artikelnummer
 Numéro d'article
 Part-No. **3786q.6**



Artikelnummer
 Numéro d'article
 Part-No. **3786u.6**



Artikelnummer
 Numéro d'article
 Part-No. **3786v.6**

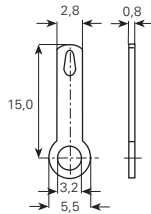
Werkstoff/Matière/Material
 .2 = Bronze/bronze
 .6 = Messing/laiton/brass
 .7 = Neusilber/mailechort/german silver
 .9 = Stahl/acier/steel

■ = Oberflächen/Surface/Surface-plating
 Seite/page/page 5.011

spezial

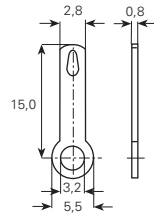
spécial

spezial

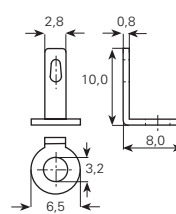


Artikelnummer
 Numéro d'article
 Part-No.

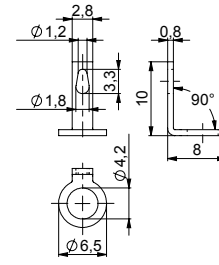
3790.6■



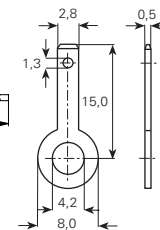
3790.7■



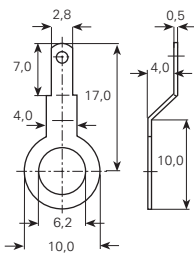
3790b.6■



3790c.6■

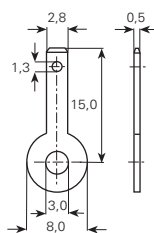


3790d.9■

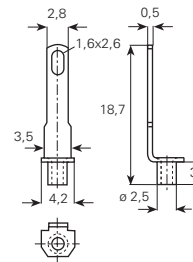


Artikelnummer
 Numéro d'article
 Part-No.

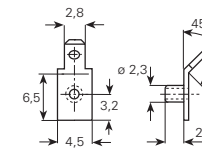
3790h.6■



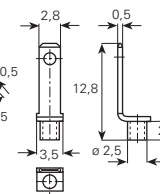
3790p.6■



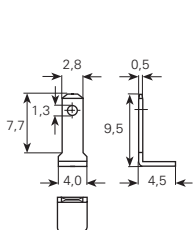
3791a.6■



3791c.6■

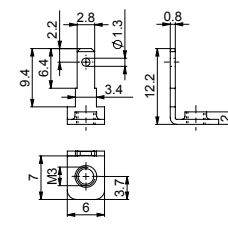


3791d.6■

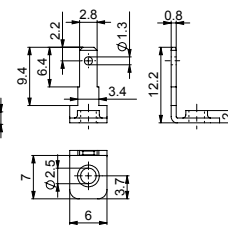


Artikelnummer
 Numéro d'article
 Part-No.

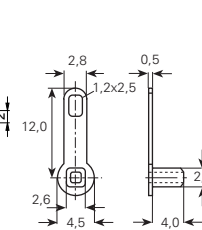
3791g.6■



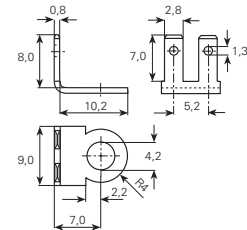
3791k.6■



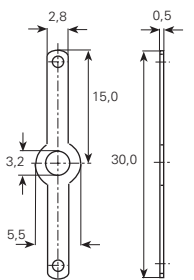
3791m.6■



3792.6■

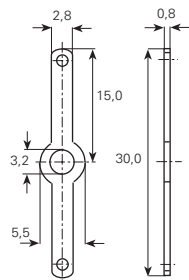


3793.6■

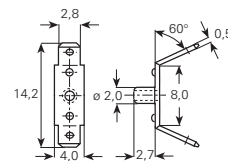


Artikelnummer
 Numéro d'article
 Part-No.

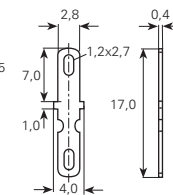
379405.6■



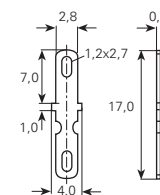
379408.6■



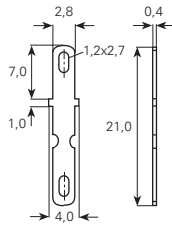
3795a.6■



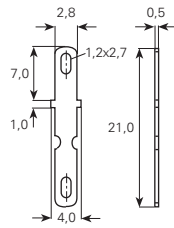
379604.6■



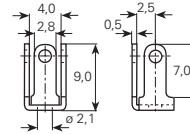
379605.6■



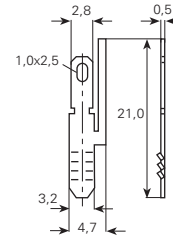
Artikelnummer
 Numéro d'article
 Part-No. **379704.6**



379705.6



3798b.6



3798r.6

Flachstecker schraubbar und schweisssbar 4,8 mm

Languettes vissable et soudable

Tabs screwable and weldable

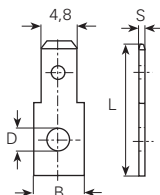
Masse im Steckbereich
DIN46342, Teil 1

Dimensions zone
d'emboîtement selon
DIN46342, partie 1

Dimensions in the tab sector
DIN46342, part 1

Werkstoff/Matière/Material
.6 = Messing/laiton/brass

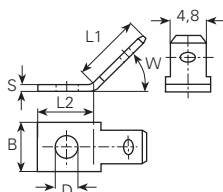
■ = Oberflächen/Surface/Surface-plating
Seite/page/page 5.011



øD mm	B mm	L mm	S mm	Artikelnummer Numéro d'article Part-No.
2.8	6.5	17.5	0.8	3810.6
3.2	6.5	17.5	0.5	381405.6
	6.5	17.5	0.8	381408.6
3.7	6.5	17.5	0.8	3818.6
4.3	6.5	17.5	0.8	3822.6
5.3	6.5	17.5	0.8	3810h.6

Werkstoff/Matière/Material
.6 = Messing/laiton/brass
.9 = Stahl/acier/steel

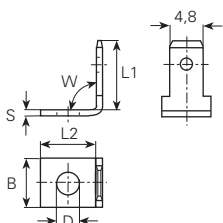
■ = Oberflächen/Surface/Surface-plating
Seite/page/page 5.011



øD mm	B mm	L1 mm	L2 mm	W mm	S mm	Artikelnummer Numéro d'article Part-No.
2.8	6.5	10	7.5	45°	0.8	3811.6
	6.5	10	7.5	45°	0.8	3811.9
3.2	6.5	10	7.5	45°	0.8	3815.6
	6.5	10	7.5	45°	0.5	381505.6
3.7	6.5	10	7.5	45°	0.8	3819.6
	6.5	10	7.5	45°	0.5	381905.6
4.3	6.5	10	7.5	45°	0.8	3823.6
	6.5	10	7.5	45°	0.5	382305.6

Werkstoff/Matière/Material
.6 = Messing/laiton/brass
.9 = Stahl/acier/steel

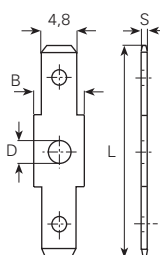
■ = Oberflächen/Surface/Surface-plating
Seite/page/page 5.011



øD mm	B mm	L1 mm	L2 mm	W mm	S mm	Artikelnummer Numéro d'article Part-No.
2.8	6.5	10	7.5	90°	0.8	381208.6
	6.5	10	7.5	90°	0.8	381208.9
3.2	6.3	12.9	11.2	90°	0.8	3828g.6
	6.5	10	7.5	90°	0.8	3816.6
3.7	6.5	10	7.5	90°	0.8	3820.6
4.3	6.5	10	7.5	90°	0.8	3824.6

Werkstoff/Matière/Material
.6 = Messing/laiton/brass
.9 = Stahl/acier/steel

■ = Oberflächen/Surface/Surface-plating
Seite/page/page 5.011



øD mm	B mm	L mm	S mm	Artikelnummer Numéro d'article Part-No.
2.8	6.5	23	0.8	3811d.6
	6.5	28	0.8	3813.6
3.2	6.5	23	0.8	3814d.6
	6.5	28	0.8	3817.6
	6.5	28	0.8	3817.9
3.7	6.5	23	0.8	3818d.6
4.2	6.5	23	0.8	3821.6
	6.5	28	0.8	3821r.6

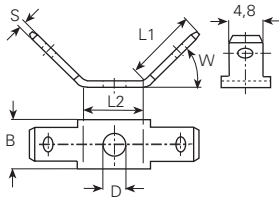


Verbindungstechnik

Flachstecker schraubbar und schweisssbar 4,8 mm Languettes vissable et soudable Tabs screwable and weldable

Werkstoff/Matière/Material
.6 = Messing/laiton/brass

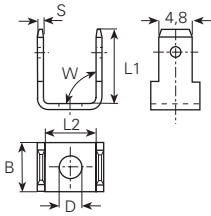
■ = Oberflächen/Surface/Surface-plating
Seite/page/page 5.011



øD mm	B mm	L1 mm	L2 mm	W mm	S mm	Artikelnummer Numéro d'article Part-No.
3.2	6.5	9.5	8.5	45°	0.8	381745.6■
3.7	6.5	9.5	8.5	45°	0.8	382114508.6■
4.2	6.5	9.5	8.5	45°	0.5	3821r4505.6■
	6.5	9.5	8.5	45°	0.8	3821r4508.6■

Werkstoff/Matière/Material
.6 = Messing/laiton/brass

■ = Oberflächen/Surface/Surface-plating
Seite/page/page 5.011



øD mm	B mm	L1 mm	L2 mm	W mm	S mm	Artikelnummer Numéro d'article Part-No.
3.2	6.5	10	7.5	90°	0.8	381790.6■
4.2	6.5	10	7.5	90°	0.8	3821r90.6■

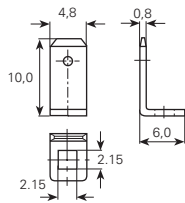
Werkstoff/Matière/Material
 .6 = Messing/laiton/brass
 .8 = rostfreier Stahl/acier inox/stainless steel
 .9 = Stahl/acier/steel

■ = Oberflächen/Surface/Surface-plating
 Seite/page/page 5.011

spécial

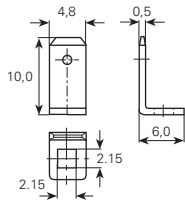
spécial

special

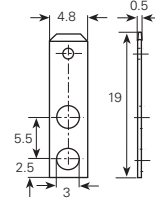


Artikelnummer
 Numéro d'article
 Part-No.

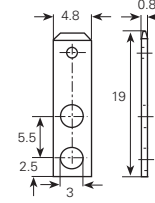
3810d.6



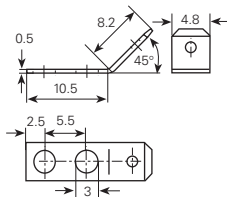
3810d05.6



3816d05.6

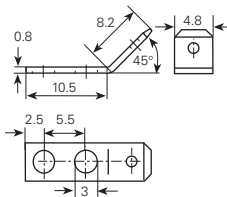


3816d08.6

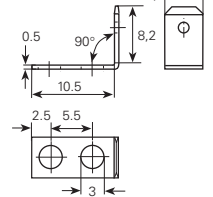


Artikelnummer
 Numéro d'article
 Part-No.

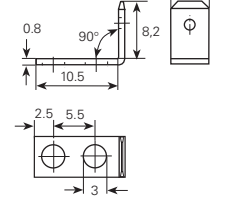
3816d4505.6



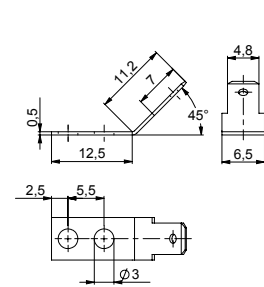
3816d4508.6



3816d9005.6

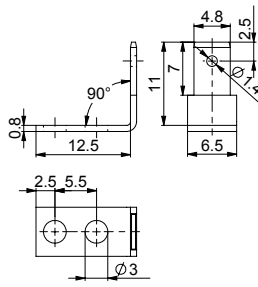


3816d9008.6

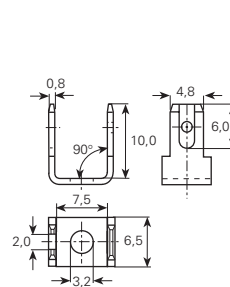


Artikelnummer
 Numéro d'article
 Part-No.

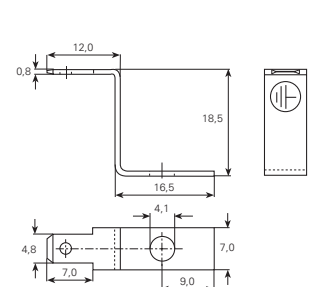
3816t4505.6



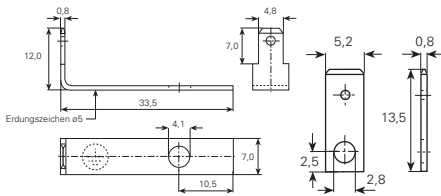
3816t9008.6



3817e90.6

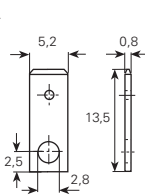


3824e.6

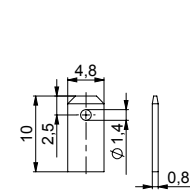


Artikelnummer
 Numéro d'article
 Part-No.

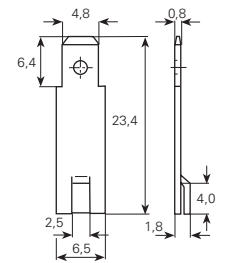
3824f.6



3828.6

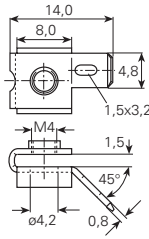


3828a.6



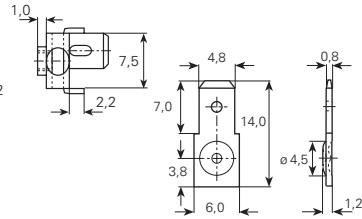
3828b.6

Flachstecker schraubbar und schweisssbar 4,8 mm
Languettes vissable et soudable
Tabs screwable and weldable

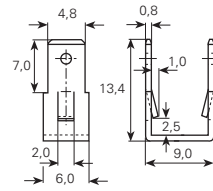


Artikelnummer
 Numéro d'article
 Part-No.

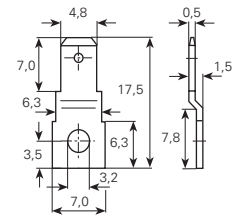
3828d.6



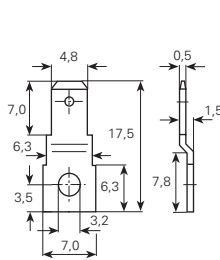
3828e.80



3828f.6

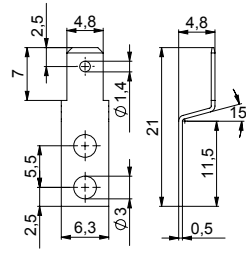


3828k.6

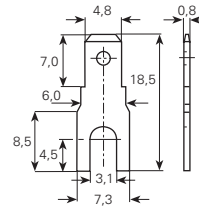


Artikelnummer
 Numéro d'article
 Part-No.

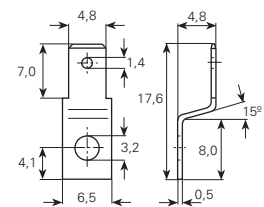
3828k.9



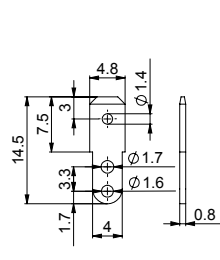
3828p05.6



3828q.6

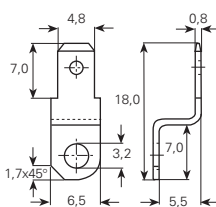


3828r.6

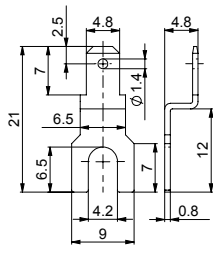


Artikelnummer
 Numéro d'article
 Part-No.

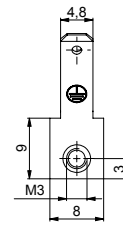
3828s.6



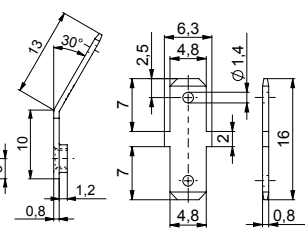
3828v.6



3828z.6



3829j.6



3829m.6

Flachstecker schraubbar und schweisssbar 6,3 mm Languettes vissable et soudable Tabs screwable and weldable

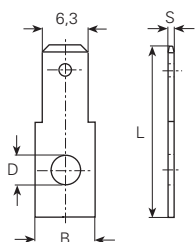
Masse im Steckbereich
DIN46342, Teil 1

Dimensions zone
d'emboîtement selon
DIN46342, partie 1

Dimensions in the tab sector
DIN46342, part 1

Werkstoff/Matière/Material
.2 = Bronze/bronze
.6 = Messing/laiton/brass
.8 = rostfreier Stahl/acier inox/stainless steel
.9 = Stahl/acier/steel

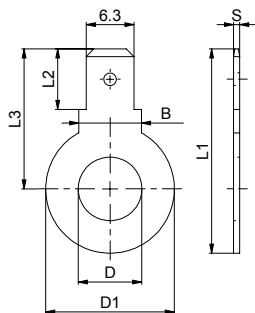
■ = Oberflächen/Surface/Surface-plating
Seite/page/page 5.011



* = ohne Bohrung / * = sans trou / * = without hole				
øD mm	B mm	L mm	S mm	Artikelnummer Numéro d'article Part-No.
*	8	19	0.8	3840.2 ■
	8	19	0.8	3840.80
	8	19	0.8	3840.9 ■
3.2	8	19	0.8	3846.6 ■
	8	23	0.8	3846c.6 ■
3.7	8	19	0.8	3849.6 ■
4.3	8	19	0.8	3854.6 ■
5.3	8	19	0.8	3859.6 ■
6.3	8	19	0.8	3864a.6 ■

Werkstoff/Matière/Material
.6 = Messing/laiton/brass

■ = Oberflächen/Surface/Surface-plating
Seite/page/page 5.011



øD mm	øD1 mm	B mm	L1 mm	L2 mm	L3 mm	S mm	Artikelnummer Numéro d'article Part-No.
5.3	12	8	23.8	8	17.8	0.8	3870m.6 ■
6.4	12	8	23.8	8	17.8	0.8	3870p.6 ■
8.4	12	8	23.8	8	17.8	0.8	3870q.6 ■
	17	8.3	27	8	18.5	0.8	3869n.6 ■
6.4	17	8	32	8	23.5	0.8	3870e.6 ■
8.4	17	8	32	8	23.5	0.8	3870f.6 ■
10.5	17	8	32	8	23.5	0.8	3870h.6 ■

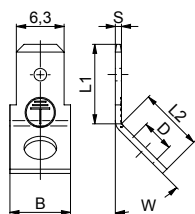
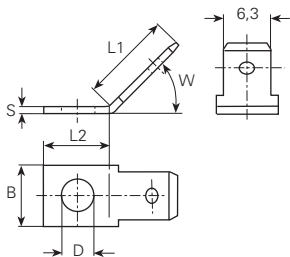
Flachstecker schraubbar und schweisssbar 6,3 mm

Languettes vissable et soudable

Tabs screwable and weldable

Werkstoff/Matière/Material
 .2 = Bronze/bronze
 .6 = Messing/laiton/brass
 .8 = rostfreier Stahl/acier inox/stainless steel
 .9 = Stahl/acier/steel

■ = Oberflächen/Surface/Surface-plating
 Seite/page/page 5.011



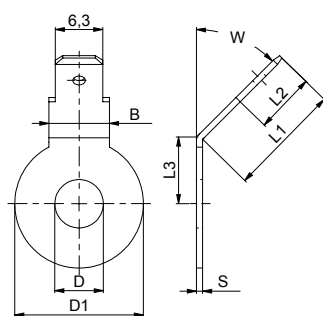
*** = ohne Bohrung / * = sans trou / * = without hole**

øD mm	B mm	L1 mm	L2 mm	W mm	S mm	Artikelnummer Numéro d'article Part-No.
*	8	10.5	8.5	45°	0.8	3841.80
	8	10.5	8.5	45°	0.8	3841.9 ■
2.2	8	10.5	8.5	45°	0.8	3843.6 ■
3.2	8	10.5	8.5	45°	0.8	3847.6 ■
3.7	8	10.5	8.5	45°	0.8	3851.6 ■
	8	10.5	8.5	45°	0.8	3851.9 ■
4.3	8	10.5	8.5	30°	0.8	3855.6 ■
	8	10.5	8.5	45°	0.8	3856.2 ■
	8	10.5	8.5	45°	0.8	3856.6 ■
	8	10.5	8.5	45°	0.8	3856.80
5.3	8	10.5	8.5	30°	0.8	3860.6 ■
	8	10.5	8.5	45°	0.8	3861.6 ■
6.3	8	10.5	8.5	45°	0.8	3864b.2 ■
	8	10.5	8.5	45°	0.8	3864b.6 ■

øD mm	B mm	L1 mm	L2 mm	W mm	S mm	Artikelnummer Numéro d'article Part-No.
3.2	8	10.5	8.5	45°	0.8	3847e.6 ■
4.3	8	10.5	8.5	45°	0.8	3856e.9 ■

Werkstoff/Matière/Material
 .6 = Messing/laiton/brass
 .8 = rostfreier Stahl/acier inox/stainless steel

■ = Oberflächen/Surface/Surface-plating
 Seite/page/page 5.011

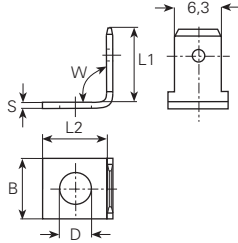


øD mm	øD1 mm	B mm	L1 mm	L2 mm	L3 mm	W mm	S mm	Artikelnummer Numéro d'article Part-No.
6.3	17	8.3	10	8	8.5	45°	0.8	3869q45.6 ■
6.4	17	8	15	8	8.5	45°	0.8	3870e45.6 ■
6.5	14	8.4	10	8	7	20°	0.8	3870g20.80
	14	8.4	10	8	7	45°	0.8	3870g45.6 ■
8.4	17	8.3	10	8	8.5	45°	0.8	3869n45.6 ■
	17	8	15	8	8.5	45°	0.8	3870f45.6 ■
10.5	17	8	15	8	8.5	45°	0.8	3870h45.6 ■

Flachstecker schraubbar und schweisssbar 6,3 mm Languettes vissable et soudable Tabs screwable and weldable

Werkstoff/Matière/Material
 .2 = Bronze/bronze
 .6 = Messing/laiton/brass
 .8 = rostfreier Stahl/acier inox/stainless steel
 .9 = Stahl/acier/steel

■ = Oberflächen/Surface/Surface-plating
 Seite/page/page 5.011

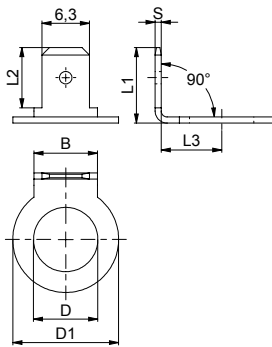


* = ohne Bohrung / * = sans trou / * = without hole

øD mm	B mm	L1 mm	L2 mm	W mm	S mm	Artikelnummer Numéro d'article Part-No.
*	8	10.5	8.5	90°	0.8	3842.80
2.7	8	10.5	8.5	90°	0.8	3845.6 ■
2.8	8	10.5	8.5	90	0.8	3845a9008.6 ■
3.2	7.8	13.7	8.5	90°	0.8	3846a.6 ■
	8	10.5	8.5	90°	0.8	3848.6 ■
	8	9.2	8.2	90°	0.8	38481.6 ■
3.7	8	10.5	8.5	90°	0.8	3853.6 ■
	8	10.5	8.5	90°	0.8	3853.9 ■
	8	10.5	8	90°	0.8	38531.2 ■
4.3	8	10.5	8.5	90°	0.8	3858.6 ■
	7.8	13.7	8.4	90°	0.8	3846v.6 ■
4.2	8	10.5	8	90°	0.8	38581.2 ■
5.3	8	10.5	8.5	90°	0.8	3863.6 ■
	8	10.5	8.5	90°	0.8	3863.80
6.3	8	10.5	8.5	90°	0.8	3864c.6 ■

Werkstoff/Matière/Material
 .6 = Messing/laiton/brass
 .8 = rostfreier Stahl/acier inox/stainless steel

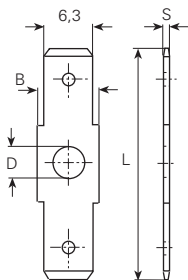
■ = Oberflächen/Surface/Surface-plating
 Seite/page/page 5.011



øD mm	øD1 mm	B mm	L1 mm	L2 mm	L3 mm	S mm	Artikelnummer Numéro d'article Part-No.
5.3	12	8	11.3	8	7.1	0.8	3870m90.6 ■
6.4	12	8	11.3	8	7.1	0.8	3870p90.6 ■
8.4	12	8	11.3	8	7.1	0.8	3870q90.6 ■
8.5	14	8.4	10	8	8	0.8	3870d.80

Werkstoff/Matière/Material
 .6 = Messing/laiton/brass
 .8 = rostfreier Stahl/acier inox/stainless steel

■ = Oberflächen/Surface/Surface-plating
 Seite/page/page 5.011



* = ohne Bohrung / * = sans trou / * = without hole

øD mm	B mm	L mm	S mm	Artikelnummer Numéro d'article Part-No.
*	8	30.5	0.8	3870b.6 ■
	8	30.5	0.8	3870b.80
3.2	8	30.5	0.8	3871b.6 ■
3.7	8	30.5	0.8	3873b.6 ■
	8	30.5	0.8	3873b.80
4.2	7.3	22.9	0.8	3873d.6 ■
	8	27	0.8	38750b.6 ■

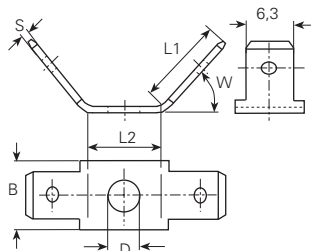
Flachstecker schraubbar und schweisssbar 6,3 mm

Languettes vissable et soudable

Tabs screwable and weldable

Werkstoff/Matière/Material
 .6 = Messing/laiton/brass
 .8 = rostfreier Stahl/acier inox/stainless steel
 .9 = Stahl/acier/steel

■ = Oberflächen/Surface/Surface-plating
 Seite/page/page 5.011

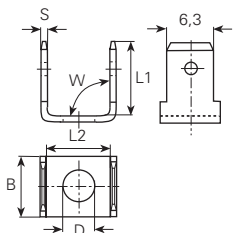


*** = ohne Bohrung / * = sans trou / * = without hole**

øD mm	B mm	L1 mm	L2 mm	W mm	S mm	Artikelnummer Numéro d'article Part-No.
*	8	10	10.5	45°	0.8	3870a.80
3.2	8	10	10.5	45°	0.8	3871a.6■
3.7	8	10	10.5	45°	0.8	3873a.6■
4.2	8	8	11	45°	0.8	38750a.6■
	10	10	12	45°	0.8	3875a.6■
	10	10	12	45°	0.8	3875a.9■
5.2	10	10	12	45°	0.8	3878a.6■
6.2	10	10	12	45°	0.8	3879a.6■

Werkstoff/Matière/Material
 .2 = Bronze/bronze
 .4 = Kupfer/cuivre/copper
 .6 = Messing/laiton/brass
 .8 = rostfreier Stahl/acier inox/stainless steel
 .9 = Stahl/acier/steel

■ = Oberflächen/Surface/Surface-plating
 Seite/page/page 5.011



*** = ohne Bohrung / * = sans trou / * = without hole**

øD mm	B mm	L1 mm	L2 mm	W mm	S mm	Artikelnummer Numéro d'article Part-No.
*	8	9.7	10.5	90°	0.8	3870c.80
	8	9.7	10.5	90°	0.8	3870c.9■
2.7	8.8	10	7	90°	0.8	38712c.6■
	8.8	10	7	90°	0.8	38732.4■
3.1	8.8	10	7	90°	0.8	38711c.2■
3.2	8	9.7	10.5	90°	0.8	3871c.6■
	8	9.6	9.8	90°	0.8	3876q02.6■
3.7	8.8	10	7	90°	0.8	38731.2■
	8.8	10	7	90°	0.8	38733.6■
	8	9.7	10.5	90°	0.8	3873c.6■
	8	9.7	10.5	90°	0.8	3873c.9■
4.2	8	10.7	11	90°	0.8	3876c.6■
4.5	9.2	14.2	7.5	90°	0.8	38760c.6■
5.3	8	9.6	9.8	90°	0.8	3876s02.6■
6.3	8	9.6	9.8	90°	0.8	3876t02.6■
	10	10	12	90°	0.8	3879c.6■
7	10	10	12	90°	0.8	3879d.4■
	10	10	12	90°	0.8	3879d.9■

Flachstecker schraubbar und schweisssbar 6,3 mm

Languettes vissable et soudable

Tabs screwable and weldable

Werkstoff/Matière/Material

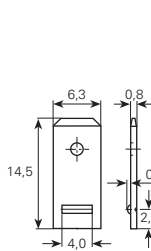
- .2 = Bronze/bronze
- .6 = Messing/laiton/brass
- .7 = Neusilber/mailechort/german silver
- .8 = rostfreier Stahl/acier inox/stainless steel
- .9 = Stahl/acier/steel

■ = Oberflächen/Surface/Surface-plating
Seite/page/page 5.011

für Schweißanschluss

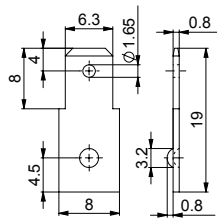
à souder

for spot welding

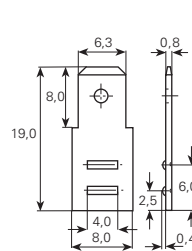


Artikelnummer
Numéro d'article
Part-No.

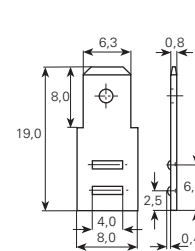
38401sb.9



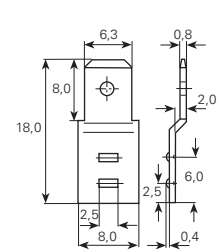
38401sbk.80



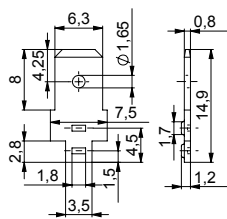
38402sb.9



38402sbs.80

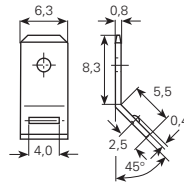


3840a2sba.9

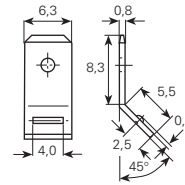


Artikelnummer
Numéro d'article
Part-No.

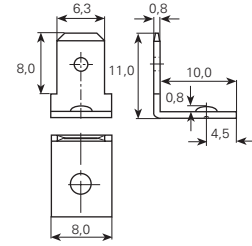
3840d2sb.9



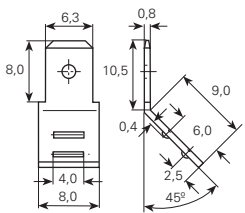
38411sbi.80



38411sbi.9

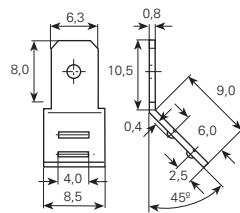


38411sbk.80

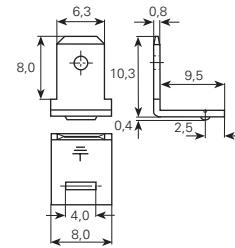


Artikelnummer
Numéro d'article
Part-No.

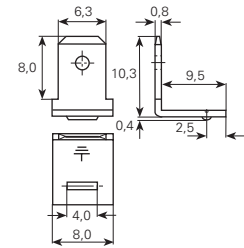
38412sba.9



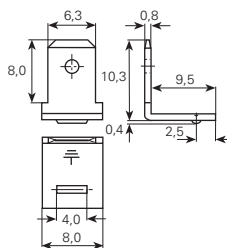
38412sbs.80



38421sbae.6

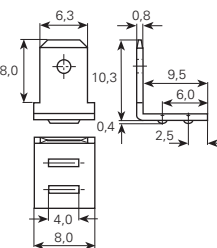


38421sbae.80

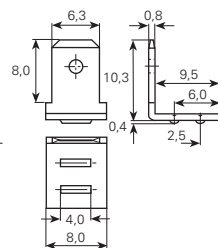


Artikelnummer
Numéro d'article
Part-No.

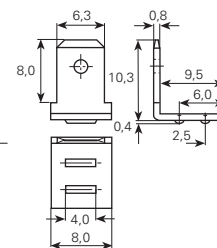
38421sbae.9



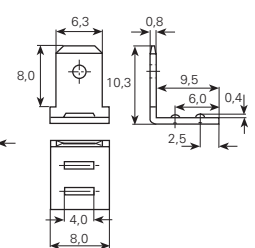
38422sba.6



38422sba.80

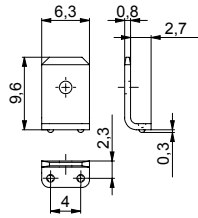


38422sba.9

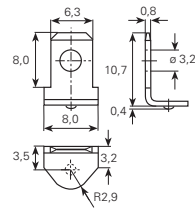


38422sbi.9

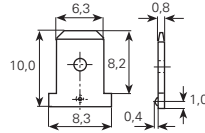
Flachstecker schraubbar und schweisssbar 6,3 mm
Languettes vissable et soudable
Tabs screwable and weldable



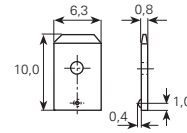
Artikelnummer
 Numéro d'article
 Part-No. **3846p.80**



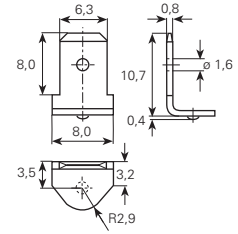
3846t.7



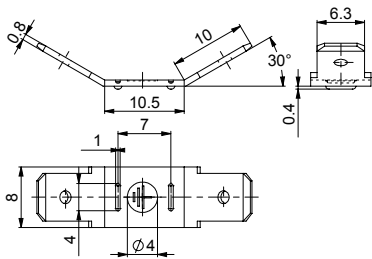
3868m.2



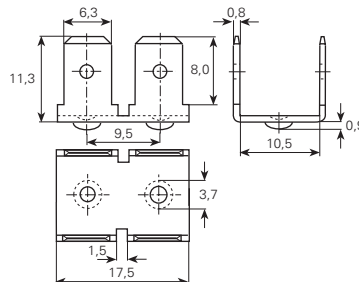
3868r.2



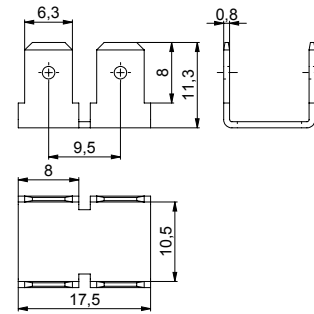
3868z.7



Artikelnummer
 Numéro d'article
 Part-No. **3871a2sba.9**



3871i.80



3871ls.80

Werkstoff/Matière/Material

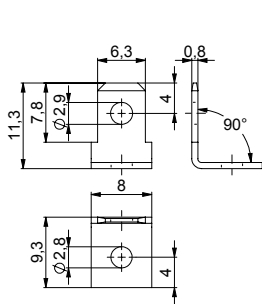
- .2 = Bronze/bronze
- .6 = Messing/laiton/brass
- .7 = Neusilber/mailechort/german silver
- .8 = rostfreier Stahl/acier inox/stainless steel
- .9 = Stahl/acier/steel

■ = Oberflächen/Surface/Surface-plating
 Seite/page/page 5.011

spezial

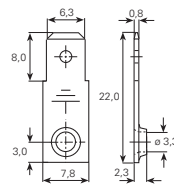
spécial

special

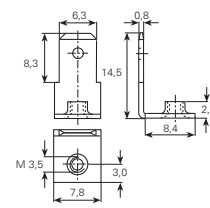


Artikelnummer
 Numéro d'article
 Part-No.

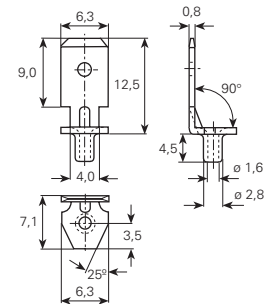
3845b9008.6



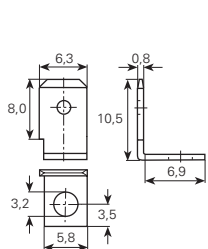
38462.6



38463.6

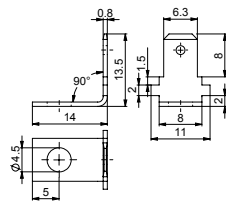


3846e.6

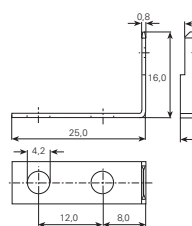


Artikelnummer
 Numéro d'article
 Part-No.

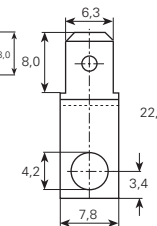
3846k.6



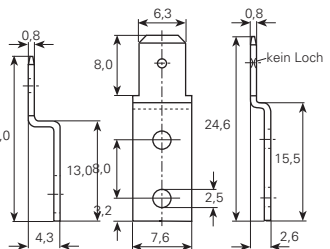
3846m.6



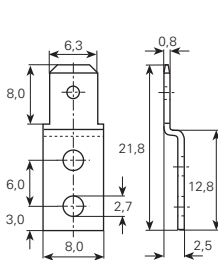
3846w.6



38541.6

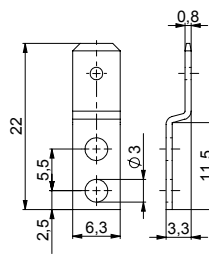


38543.6

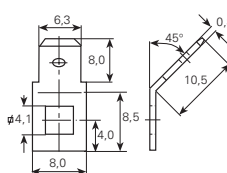


Artikelnummer
 Numéro d'article
 Part-No.

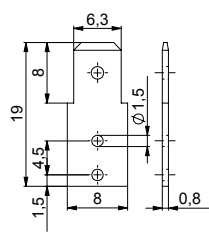
3854r.6



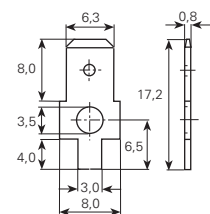
3854t.6



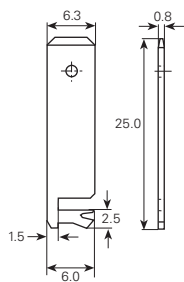
3856p.6



3864d.6

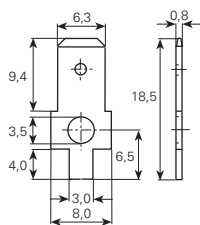


3865a.6

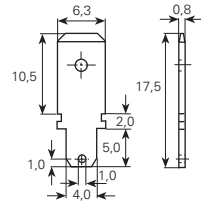


Artikelnummer
 Numéro d'article
 Part-No.

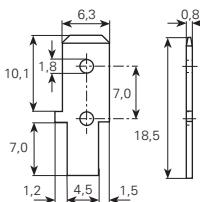
3865b.6



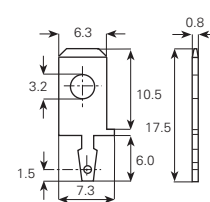
3865c.6



3865g.6

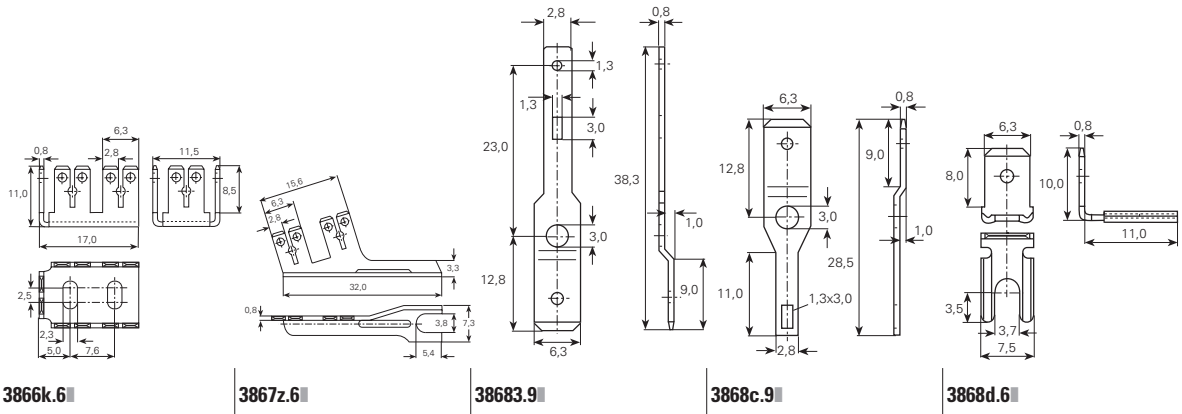


3865h.6



3866d.6

Flachstecker schraubbar und schweisbar 6,3 mm
Languettes vissable et soudable
Tabs screwable and weldable



Artikelnummer
Numéro d'article
Part-No.

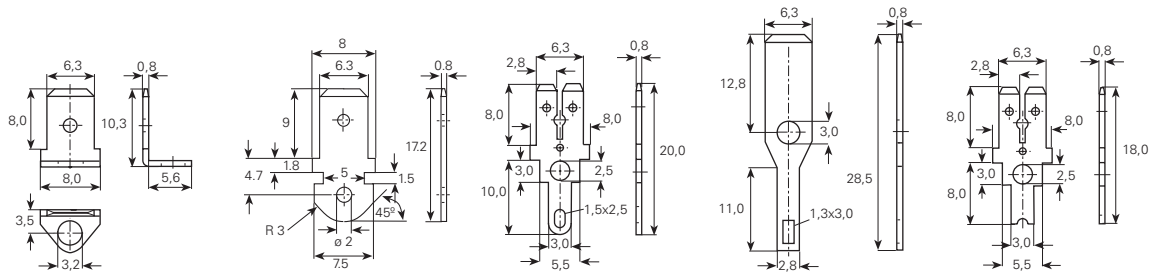
3866k.6

3867z.6

38683.9

3868c.9

3868d.6



Artikelnummer
Numéro d'article
Part-No.

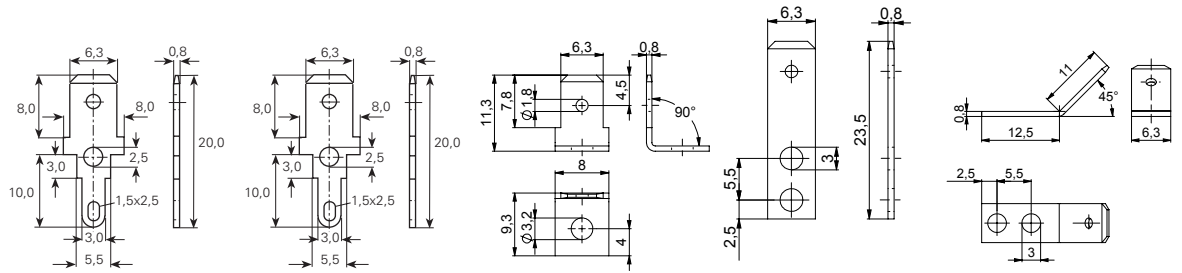
3868h.7

3868q.2

3868u.6

3868v.9

3868w.6



Artikelnummer
Numéro d'article
Part-No.

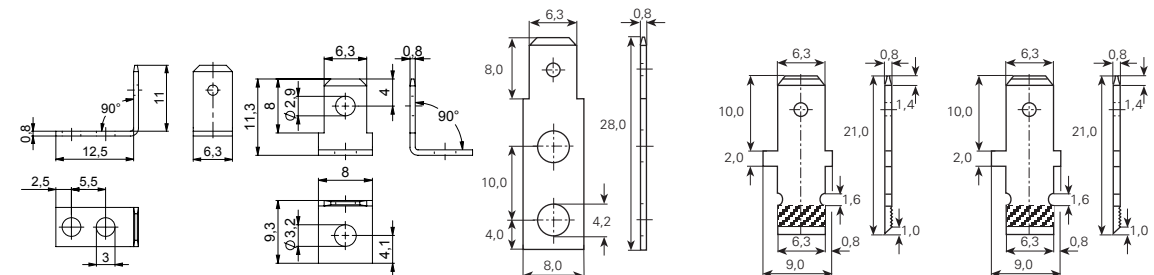
3868x.6

3868x.7

384819008.6

3848t08.6

3848t4508.6



Artikelnummer
Numéro d'article
Part-No.

3848t9008.6

3848s.6

3869.6

38692.6

38692.7

Flachstecker schraubbar und schweisssbar 6,3 mm

Languettes vissable et soudable

Tabs screwable and weldable

Werkstoff/Matière/Material

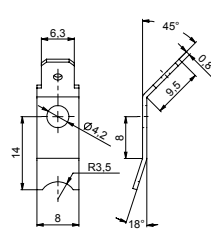
- .2 = Bronze/bronze
- .6 = Messing/laiton/brass
- .7 = Neusilber/mailechort/german silver
- .8 = rostfreier Stahl/acier inox/stainless steel
- .9 = Stahl/acier/steel

■ = Oberflächen/Surface/Surface-plating
Seite/page/page 5.011

spezial

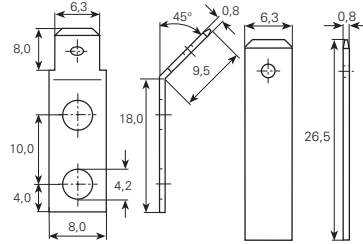
spécial

spezial

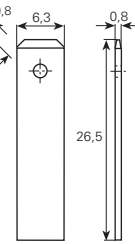


Artikelnummer
Numéro d'article
Part-No.

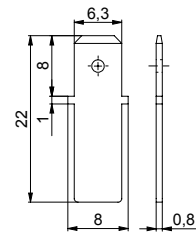
38695.6



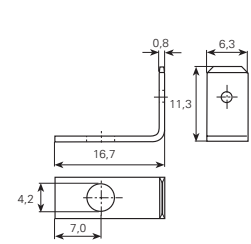
386945.6



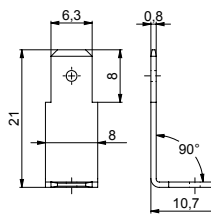
3869a.6



3869ab.6

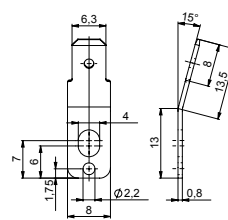


3869a90.6

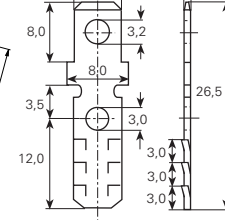


Artikelnummer
Numéro d'article
Part-No.

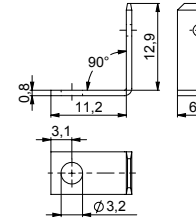
3869ac.6



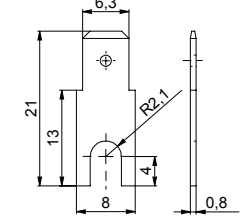
3869ad15.80



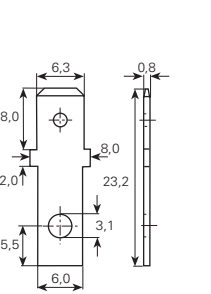
3869b.6



3869c.6

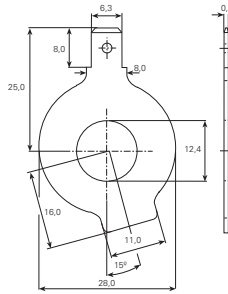


3869d.6

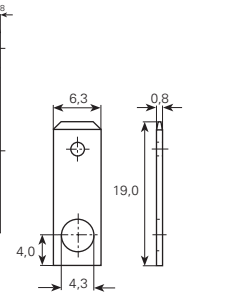


Artikelnummer
Numéro d'article
Part-No.

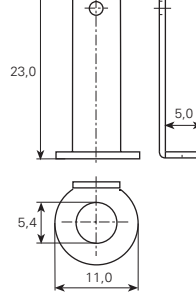
3869e.6



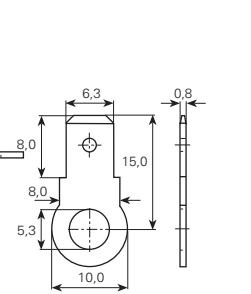
3869f.6



3869g.6

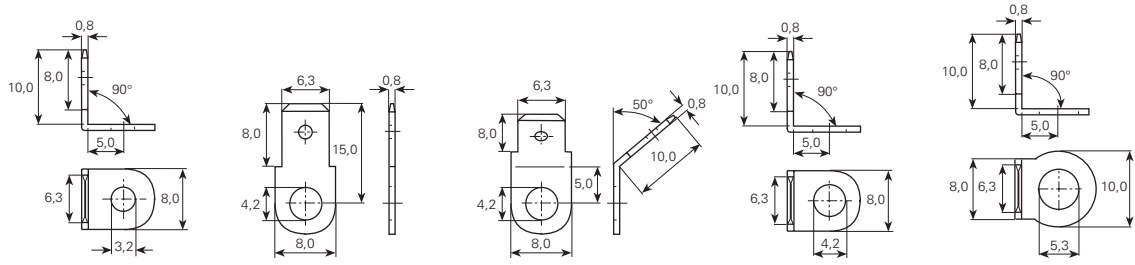


3869h.9



3869k.6

Flachstecker schraubbar und schweisbar 6,3 mm
Languettes vissable et soudable
Tabs screwable and weldable



Artikelnummer
Numéro d'article
Part-No.

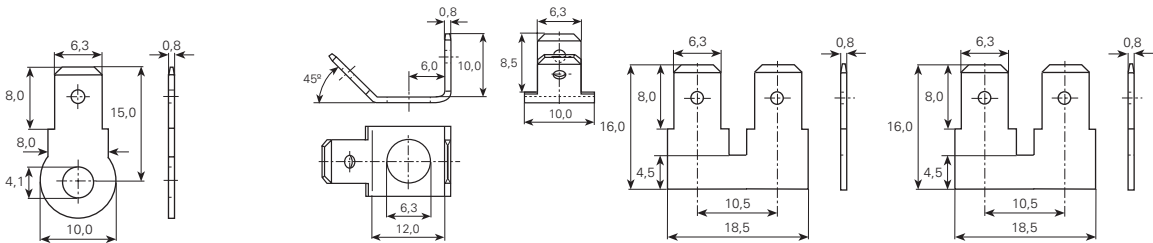
3869I90.6

3869m.6

3869m50.2

3869m90.6

3869p90.6



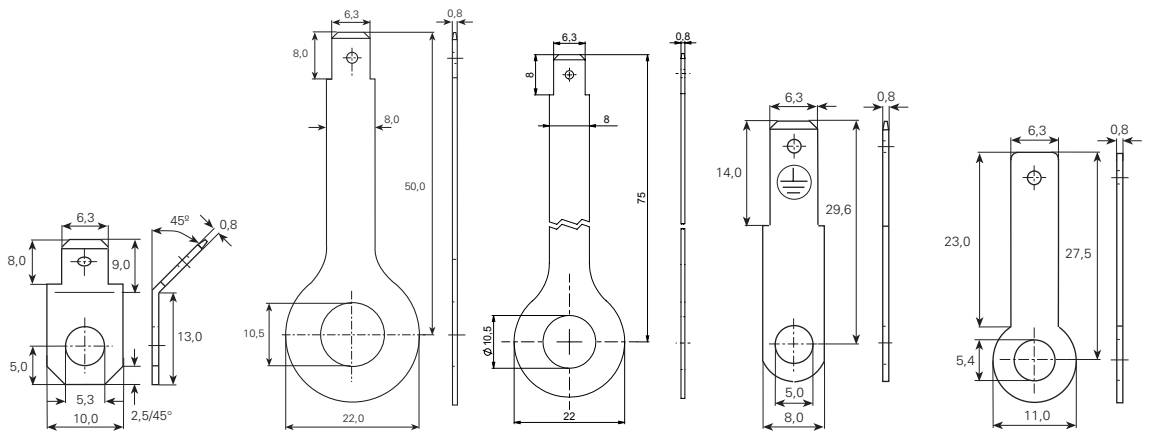
Artikelnummer
Numéro d'article
Part-No.

3869p.6

3879f.6

3869r.6

3869r.9



Artikelnummer
Numéro d'article
Part-No.

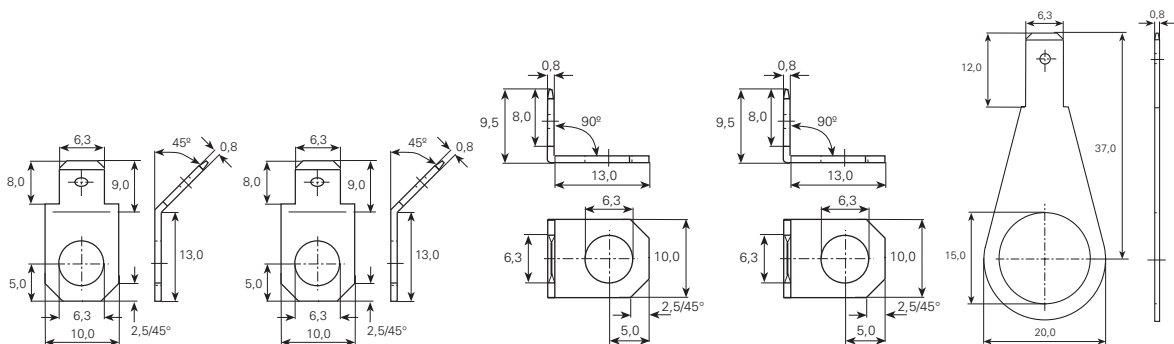
3869s.6

3869t.6

3869u.6

3869v.6

3869w.9



Artikelnummer
Numéro d'article
Part-No.

3869x.6

3869x.9

3869x90.6

3869x90.9

3869y.6

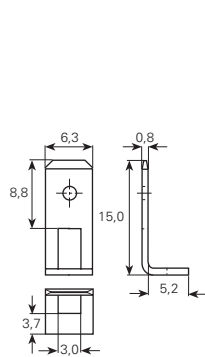
Werkstoff/Matière/Material
 .2 = Bronze/bronze
 .6 = Messing/laiton/brass
 .7 = Neusilber/mailechort/german silver
 .8 = rostfreier Stahl/acier inox/stainless steel
 .9 = Stahl/acier/steel

■ = Oberflächen/Surface/Surface-plating
 Seite/page/page 5.011

spezial

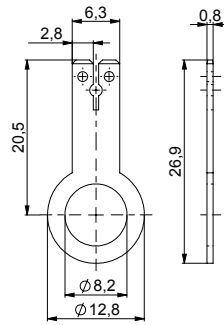
spécial

special

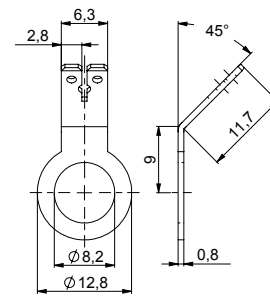


Artikelnummer
 Numéro d'article
 Part-No.

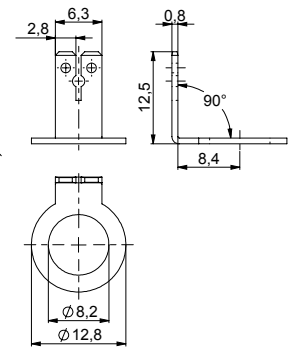
3869z.6



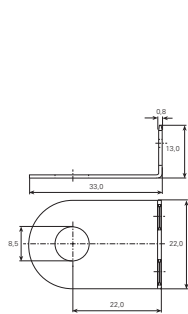
3870n.6



3870n45.6

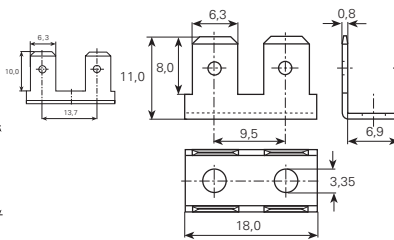


3870n90.6

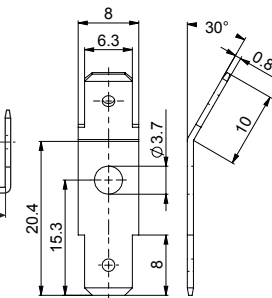


Artikelnummer
 Numéro d'article
 Part-No.

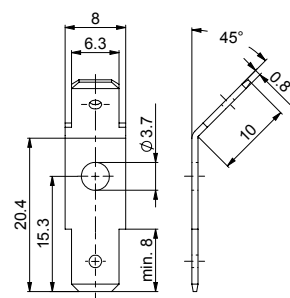
3871d.6



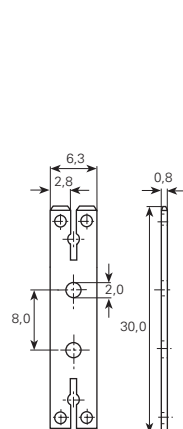
3871h.9



3873k.6

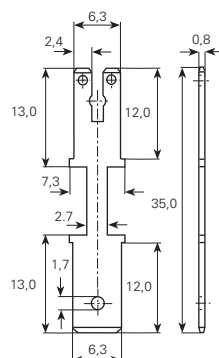


3873m.6

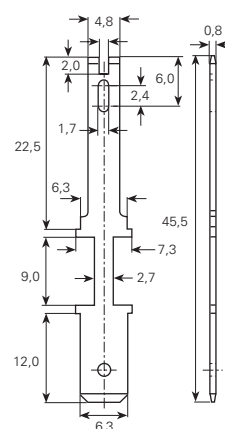


Artikelnummer
 Numéro d'article
 Part-No.

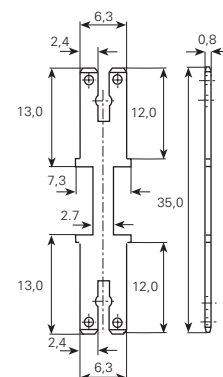
3875h.6



3875l.6



3875m.6



3875p.6