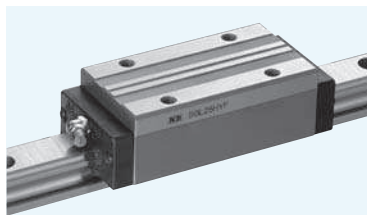


# SGL-HYF TYPE



## part number structure

example **SGL15HYFB2T1-589P/W2FSLBFJKGL**

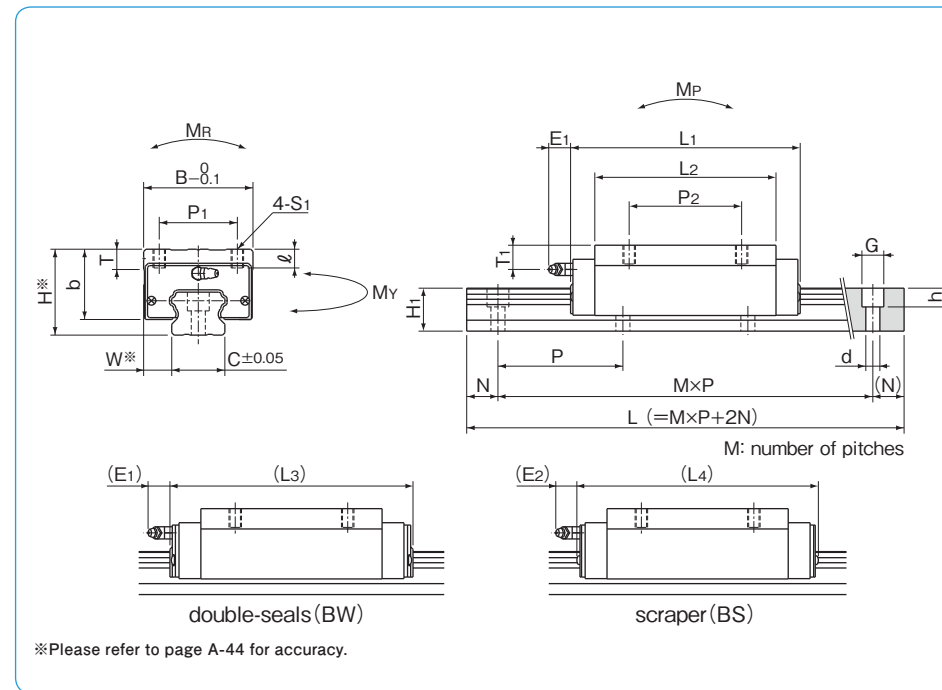
<p>example</p> <p>SGL type</p> <p>size</p> <p>block style</p> <p>seal (refer to page A-14)</p> <p>blank: with side-seals</p> <p>B: with side-seals + under-seals</p> <p>BW: with double-seals + under-seals</p> <p>BS: B + scraper</p> <p>number of blocks attached to one rail</p> <p>preload symbol</p> <p>blank: standard</p> <p>T1: light</p> <p>T2: medium</p> <p>total length of rail</p>	<p>symbol for grease</p> <p>blank: standard grease</p> <p>KGL: lithium-based grease</p> <p>KGU: urea-based grease</p> <p>KGF: anti-fretting grease</p> <p>KG: K-grease</p> <p>refer to page Eng-39~</p> <p>with bellows (refer to page A-16)</p> <p>with rail mounting hole caps</p> <p>with low temperature black chrome treatment</p> <p>with Fiber Sheet (Fiber Sheet comes only with standard grease.)</p> <p>symbol for number of axes*</p> <p>blank: single axis</p> <p>W2: 2 parallel axes</p> <p>W3: 3 parallel axes</p> <p>accuracy grade</p> <p>blank: standard</p> <p>H: high</p> <p>P: precision</p>
---	--

\*The symbol for the number of axes does not mean the number of rails ordered.

part number	assembly dimensions		block dimensions												
	H	W	B	L <sub>1</sub>	L <sub>2</sub>	L <sub>3</sub>	L <sub>4</sub>	P <sub>1</sub>	P <sub>2</sub>	S <sub>1</sub>	ℓ	T	b	E <sub>1</sub>	E <sub>2</sub>
	mm	mm	mm	mm	mm	mm	mm	mm	mm	mm	mm	mm	mm	mm	mm
<b>SGL15HYF</b>	28	9.5	34	79	61	82.5	85.6	26	26	M4	5	6	23.7	6	5.4
<b>SGL20HYF</b>	30	12	44	96	77.6	102.2	102.6	32	50	M5	6	9.5	24	12	11
<b>SGL25HYF</b>	40	12.5	48	109	88	115.4	116.2	35	50	M6	8	9	33		
<b>SGL30HYF</b>	45	16	60	129	101	137.6	136.6	40	60	M8	10	13	35.5	15	15
<b>SGL35HYF</b>	55	18	70	147	116	155.6	154.6	50	72		12		45		
<b>SGL45HYF</b>	70	20.5	86	171	134	179.5	180	60	80	M10	17	15	60	15	15

part number	standard rail length															
	L mm															
<b>SGL15</b>	160	220	280	340	400	460	520	580	640	700	760	820	880	940	1,000	1,120
<b>SGL20</b>	220	280	340	400	460	520	580	640	700	760	820	880	940	1,000	1,120	1,240
<b>SGL25</b>	220	280	340	400	460	520	580	640	700	760	820	880	940	1,000	1,120	1,240
<b>SGL30</b>	280	360	440	520	600	680	760	840	920	1,000	1,080	1,160	1,240	1,320	1,400	1,480
<b>SGL35</b>	280	360	440	520	600	680	760	840	920	1,000	1,080	1,160	1,240	1,320	1,400	1,480
<b>SGL45</b>	570	675	780	885	990	1,095	1,200	1,305	1,410	1,515	1,620	1,725	1,830	1,935	2,040	2,145

Rails exceeding the maximum specified length may be fabricated if joints are used. Please contact NB for assistance.



\*Please refer to page A-44 for accuracy.

T <sub>1</sub>	grease fitting	guide rail dimensions				N	P	basic load rating			allowable static moment		mass		block size
		H <sub>1</sub>	C	d × G × h	mm			mm	dynamic C	static C <sub>0</sub>	M <sub>P</sub>	M <sub>Y</sub>	M <sub>R</sub>	block kg	
mm		mm	mm	mm	mm	mm	kN	kN	N · m	N · m	N · m	kg	kg/m		
9	pressed fitting	13.5	15	4.5 × 7.5 × 5.3	20	60	14.6	25.6	238	238	200	0.3	1.3	<b>15</b>	
8	B-M6F	16	20	6 × 9.5 × 8.5			23.9	40.2	467	467	432	0.5	2.1	<b>20</b>	
13.5		20	23	7 × 11 × 9	32.8	54.5	723	723	655	0.9	3.0	<b>25</b>			
12		24	28	9 × 14 × 12	44.6	73.8	1,144	1,144	1,074	1.3	4.6	<b>30</b>			
15.5	27.5	34	61.9		97.2	1,722	1,722	1,782	2.2	6.2	<b>35</b>				
20	B-PT1/8	36.5	45	14 × 20 × 17	22.5	105	91.4	134.9	2,681	2,681	3,082	4.0	10.5	<b>45</b>	

1kN ≅ 102kgf 1N · m ≅ 0.102kgf · m

							maximum length	
							mm	
1,240	1,360	1,480					2,000	
1,360	1,480	1,600	1,660	1,720	1,840	1,960	3,000	
1,360	1,480	1,600	1,660	1,720	1,840	1,960	3,000	
1,640	1,720	1,800	1,880	1,960			3,000	
1,640	1,720	1,800	1,880	1,960			3,000	
2,250	2,355	2,460	2,565	2,670	2,775	2,880	2,985	3,000